

# [KD Validated] TFEB Rabbit mAb

Catalog No.: A25981 **Recombinant**

## Basic Information

### Observed MW

65-70 kDa

### Calculated MW

44 kDa/53 kDa

### Category

Primary antibody

### Applications

WB,IP,IHC-P,ChIP,ELISA

### Cross-Reactivity

Human, Rat

### CloneNo number

ARC68094

## Background

Enables DNA-binding transcription factor activity; enzyme binding activity; and transcription cis-regulatory region binding activity. Involved in several processes, including cellular response to amino acid starvation; lysosome localization; and positive regulation of autophagy. Located in cytosol; lysosomal membrane; and nucleoplasm.

## Recommended Dilutions

**WB** 1:1000 - 1:2000

**IP** 0.5 µg - 4 µg antibody for  
400 µg - 600 µg extracts  
of whole cells

**IHC-P** 1:200 - 1:800

**ChIP** 5 µg antibody for 10 µg -  
15µg of Chromatin

**ELISA** Recommended starting  
concentration is 1 µg/mL.  
Please optimize the  
concentration based on  
your specific assay  
requirements.

## Contact

☎ | 400-999-6126

✉ | [cn.market@abclonal.com.cn](mailto:cn.market@abclonal.com.cn)

## Immunogen Information

### Gene ID

7942

### Swiss Prot

P19484

### Immunogen

Recombinant protein (or fragment). This information is considered to be commercially sensitive.

### Synonyms

TCFEB; BHLHE35; ALPHATFEB

## Product Information

### Source

Rabbit

### Isotype

IgG

### Purification

Affinity purification

### Storage

Store at -20°C. Avoid freeze / thaw cycles.

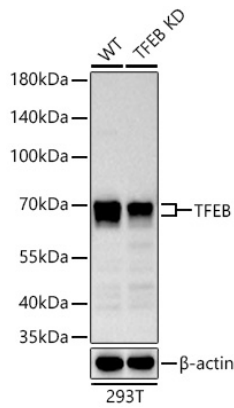
Buffer: PBS containing 50% glycerol and 0.05% BSA, preserved with proclin300 or sodium azide (as specified on the Certificate of Analysis), pH 7.3.



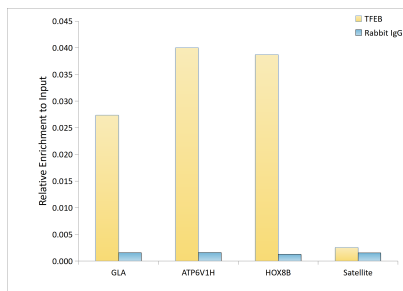
[www.abclonal.com.cn](http://www.abclonal.com.cn)

---

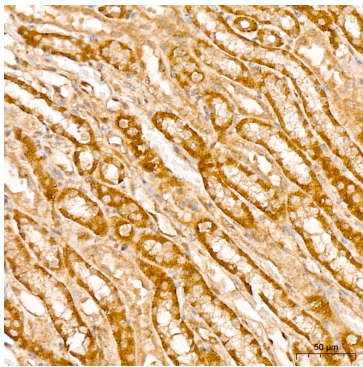
## Validation Data



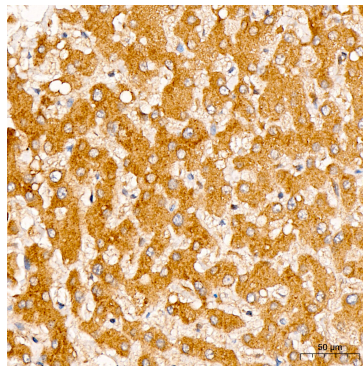
Western blot analysis of lysates from wild type (WT) and TFEB knockdown (KD) 293T cells using [KD Validated] TFEB Rabbit mAb (A25981) at 1:1000 dilution incubated overnight at 4°C. Secondary antibody: HRP-conjugated Goat anti-Rabbit IgG (H+L) (AS014) at 1:10000 dilution. Lysates/proteins: 25 µg per lane. Blocking buffer: 3% nonfat dry milk in TBST. Detection: ECL Basic Kit (RM00020). Exposure time: 90s.



Chromatin immunoprecipitation was performed with 15 µg of cross-linked chromatin from Raji cells treated by Torin-1 (250nM, 5h), using 5 µg of [KD Validated] TFEB Rabbit mAb (A25981) and Rabbit IgG isotype control (AC042). The enrichment of immunoprecipitated DNA at different genomic loci was examined by quantitative PCR. The histogram compares the ratio of the immunoprecipitated DNA to the input at given loci.



Immunohistochemistry analysis of paraffin-embedded Rat kidney tissue using [KD Validated] TFEB Rabbit mAb (A25981) at a dilution of 1:200 (40x lens). High pressure antigen retrieval performed with 0.01M Citrate Buffer (pH 6.0) prior to IHC staining.



Immunohistochemistry analysis of paraffin-embedded Human liver tissue using [KD Validated] TFEB Rabbit mAb (A25981) at a dilution of 1:200 (40x lens). High pressure antigen retrieval performed with 0.01M Citrate Buffer (pH 6.0) prior to IHC staining.