

ABflo® 700 Rat anti-Mouse MHC Class II (I-A/I-E) mAb

Catalog No.: A25999

Basic Information

Observed MW

Calculated MW

30kDa/32kDa/26kDa

Category

Primary antibody

Applications

FC

Cross-Reactivity

Mouse

CloneNo number

ATC50002

Conjugate

ABflo® 700. Ex:690nm. Em:713nm.

Recommended Dilutions

FC 5 µl per 10⁶ cells in
100 µl volume

Background

Predicted to enable several functions, including MHC class II receptor activity; peptide antigen binding activity; and signaling receptor binding activity. Involved in response to interferon-gamma. Acts upstream of or within antigen processing and presentation of exogenous peptide antigen via MHC class II. Predicted to be located in external side of plasma membrane and immunological synapse. Predicted to be part of MHC class II protein complex. Predicted to be active in late endosome membrane and lysosomal membrane. Is expressed in lung. Human ortholog(s) of this gene implicated in several diseases, including asthma (multiple); autoimmune disease (multiple); bacterial infectious disease (multiple); eye disease (multiple); and sarcoidosis (multiple). Orthologous to human HLA-DRB1 (major histocompatibility complex, class II, DR beta 1) and HLA-DRB5 (major histocompatibility complex, class II, DR beta 5).

Immunogen Information

Gene ID

14969/14961/381091/14960

Swiss Prot

P18468/P06342/Q3U060/P14435

Immunogen

Recombinant protein (or fragment). This information is considered to be commercially sensitive.

Synonyms

Eb; Ia4; H2Eb; Ia-4; H-2Eb

Contact

☎ | 400-999-6126

✉ | cn.market@abclonal.com.cn

🌐 | www.abclonal.com.cn

Product Information

Source

Rat

Isotype

Rat / IgG2a, kappa

Purification

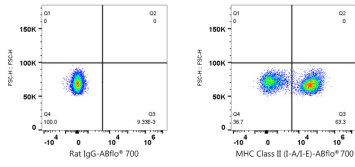
Affinity purification

Storage

Store at 2-8°C. Avoid freeze.

Buffer: PBS, preserved with proclin300 or sodium azide (as specified on the Certificate of Analysis), pH 7.3.

Validation Data



Flow cytometry: 1X10⁶ C57BL/6 mouse splenocytes were surface-stained with ABflo® 700 Rat IgG isotype control (5 µl/Test,left) or ABflo® 700 Rat anti-Mouse MHC Class II (I-A/I-E) mAb (A25999,5 µl/Test,right).