

ABflo® 488 Conjugated AIF1/IBA1 Rabbit mAb

Catalog No.: A26032 **Recombinant**

Basic Information

Observed MW

17kDa

Calculated MW

17kDa

Category

Primary antibody

Applications

WB,IF/ICC

Cross-Reactivity

Human,Mouse,Rat

CloneNo number

ARC2301-ABf488

Conjugate

ABflo® 488. Ex:491nm. Em:516nm.

Recommended Dilutions

WB	1:2500 - 1:10000
IF/ICC	1:200 - 1:1000

Background

Enables actin filament binding activity and calcium ion binding activity. Involved in several processes, including Rac protein signal transduction; actin filament organization; and ruffle assembly. Acts upstream of or within actin filament bundle assembly. Located in several cellular components, including actin filament; phagocytic cup; and ruffle membrane. Is expressed in adrenal cortex; central nervous system; embryo mesenchyme; and retina. Human ortholog(s) of this gene implicated in type 1 diabetes mellitus. Orthologous to human AIF1 (allograft inflammatory factor 1).

Immunogen Information

Gene ID

11629

Swiss Prot

O70200(mouse),P55008(Human)

Immunogen

A synthetic peptide corresponding to a sequence within amino acids 1-100 of mouse AIF1/IBA1 (O70200).

Synonyms

G1; Iba1; AIF-1; D17H6S50E

Contact

☎ | 400-999-6126

✉ | cn.market@abclonal.com.cn

🌐 | www.abclonal.com.cn

Product Information

Source

Rabbit

Isotype

IgG

Purification

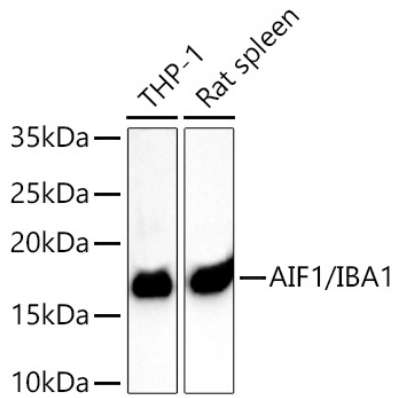
Affinity purification

Storage

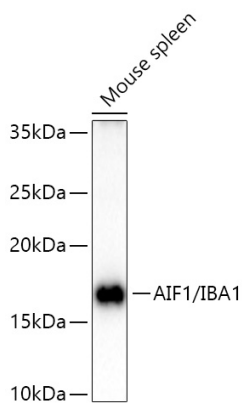
Store at -20°C. Avoid freeze.

Buffer:PBS with 0.03% proclin300,0.2% BSA,50% glycerol,pH7.3.

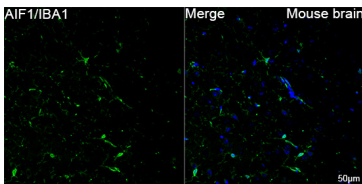
Validation Data



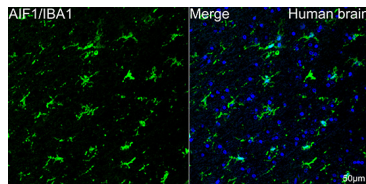
Western blot analysis of various lysates using ABflo® 488 Conjugated AIF1/IBA1 Rabbit mAb (A26032) at 1:5000 dilution incubated overnight at 4°C.
 Secondary antibody: HRP-conjugated Goat anti-Rabbit IgG (H+L) (AS014) at 1:10000 dilution.
 Lysates/proteins: 25 µg per lane.
 Blocking buffer: 3% nonfat dry milk in TBST.
 Detection: ECL Basic Kit (RM00020).
 Exposure time: 20s.



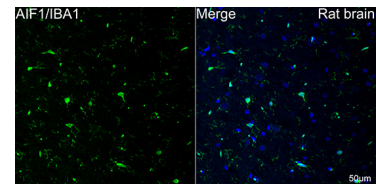
Western blot analysis of lysates from Mouse spleen using ABflo® 488 Conjugated AIF1/IBA1 Rabbit mAb (A26032) at 1:5000 dilution incubated overnight at 4°C.
 Secondary antibody: HRP-conjugated Goat anti-Rabbit IgG (H+L) (AS014) at 1:10000 dilution.
 Lysates/proteins: 25 µg per lane.
 Blocking buffer: 3% nonfat dry milk in TBST.
 Detection: ECL Basic Kit (RM00020).
 Exposure time: 45s.



Confocal imaging of paraffin-embedded Mouse brain tissue using ABflo® 488 Conjugated AIF1/IBA1 Rabbit mAb (A26032, dilution 1:500). DAPI was used for nuclear staining (Blue). High pressure antigen retrieval performed with 0.01M Citrate Buffer(pH 6.0) prior to IF staining. Objective: 40x.



Confocal imaging of paraffin-embedded Human brain tissue using ABflo® 488 Conjugated AIF1/IBA1 Rabbit mAb (A26032, dilution 1:500). DAPI was used for nuclear staining (Blue). Microwave antigen retrieval performed with 0.01M Citrate Buffer(pH 6.0) prior to IF staining. Objective: 40x.



Confocal imaging of paraffin-embedded Rat brain tissue using ABflo® 488 Conjugated AIF1/IBA1 Rabbit mAb (A26032, dilution 1:500). DAPI was used for nuclear staining (Blue). Microwave antigen retrieval performed with 0.01M Citrate Buffer(pH 6.0) prior to IF staining. Objective: 40x.