

ABflo® 647 Conjugated AIF1/IBA1 Rabbit mAb

Catalog No.: A26033 **Recombinant**

Basic Information

Observed MW

Calculated MW
17kDa

Category
Primary antibody

Applications
IF/ICC

Cross-Reactivity
Human, Mouse, Rat

CloneNo number
ARC2301-ABf647

Conjugate
ABflo® 647. Ex:648nm. Em:664nm.

Recommended Dilutions

IF/ICC 1:500 - 1:1000

Background

Enables actin filament binding activity and calcium ion binding activity. Involved in several processes, including Rac protein signal transduction; actin filament organization; and ruffle assembly. Acts upstream of or within actin filament bundle assembly. Located in several cellular components, including actin filament; phagocytic cup; and ruffle membrane. Is expressed in adrenal cortex; central nervous system; embryo mesenchyme; and retina. Human ortholog(s) of this gene implicated in type 1 diabetes mellitus. Orthologous to human AIF1 (allograft inflammatory factor 1).

Immunogen Information

Gene ID 11629 **Swiss Prot** O70200(mouse),P55008(Human)

Immunogen
A synthetic peptide corresponding to a sequence within amino acids 1-100 of mouse AIF1/IBA1 (O70200).

Synonyms
G1; Iba1; AIF-1; D17H6S50E

Contact

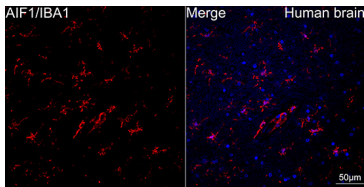
 | 400-999-6126
 | cn.market@abclonal.com.cn
 | www.abclonal.com.cn

Product Information

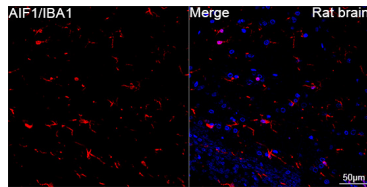
Source Rabbit **Isotype** IgG **Purification** Affinity purification

Storage
Store at 2-8°C. Avoid freeze.
Buffer: PBS with 0.03% proclin300,0.2% BSA,pH7.3.

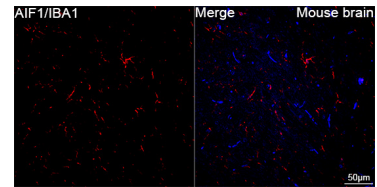
Validation Data



Confocal imaging of paraffin-embedded Human brain tissue using ABflo® 647 Conjugated AIF1/IBA1 Rabbit mAb (A26033, dilution 1:500). DAPI was used for nuclear staining (Blue). Microwave antigen retrieval performed with 0.01M Citrate Buffer(pH 6.0) prior to IF staining. Objective: 40x.



Confocal imaging of paraffin-embedded Rat brain tissue using ABflo® 647 Conjugated AIF1/IBA1 Rabbit mAb (A26033, dilution 1:500). DAPI was used for nuclear staining (Blue). Microwave antigen retrieval performed with 0.01M Citrate Buffer(pH 6.0) prior to IF staining. Objective: 40x.



Confocal imaging of paraffin-embedded Mouse brain tissue using ABflo® 647 Conjugated AIF1/IBA1 Rabbit mAb (A26033, dilution 1:500). DAPI was used for nuclear staining (Blue). Microwave antigen retrieval performed with 0.01M Citrate Buffer(pH 6.0) prior to IF staining. Objective: 40x.