

CD4 Rabbit PolymAb®

Catalog No.: A26036

Basic Information

Observed MW

55kDa

Calculated MW

51kDa

Category

Primary antibody

Applications

ELISA, WB, IHC-P, IF/ICC

Cross-Reactivity

Human, Mouse

CloneNo number

ARC0328_ARC64071

Background

Predicted to enable several functions, including interleukin-16 binding activity; interleukin-16 receptor activity; and protein homodimerization activity. Involved in helper T cell enhancement of adaptive immune response. Acts upstream of or within several processes, including defense response to Gram-negative bacterium; positive regulation of calcium-mediated signaling; and positive regulation of peptidyl-tyrosine phosphorylation. Located in endoplasmic reticulum; external side of plasma membrane; and membrane raft. Is expressed in several structures, including alimentary system; brain; genitourinary system; hemolymphoid system; and liver and biliary system. Used to study type 1 diabetes mellitus. Human ortholog(s) of this gene implicated in immunodeficiency 79. Orthologous to human CD4 (CD4 molecule).

Recommended Dilutions

WB	1:500 - 1:1000
IHC-P	1:500 - 1:1000
IF/ICC	1:50 - 1:200

Immunogen Information

Gene ID

12504

Swiss Prot

P06332/P06332

Immunogen

Recombinant protein of CD4 (P01730).

Synonyms

L3T4; Ly-4

Contact

 | 400-999-6126 | cn.market@abclonal.com.cn | www.abclonal.com.cn

Product Information

Source

Rabbit

Isotype

IgG

Purification

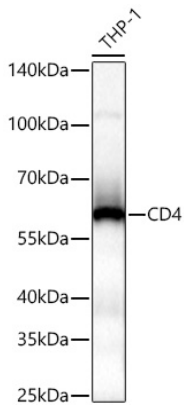
Affinity purification

Storage

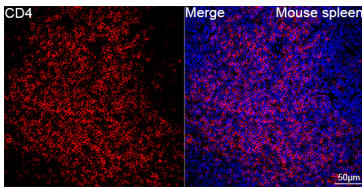
Store at -20°C. Avoid freeze / thaw cycles.

Buffer: PBS with 0.05% proclin300, 0.05% BSA, 50% glycerol, pH7.3.

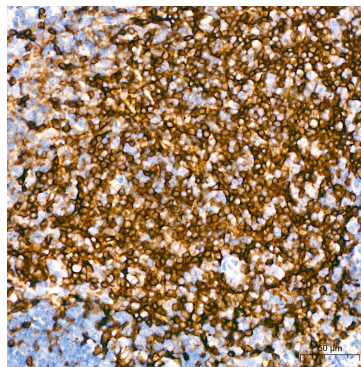
Validation Data



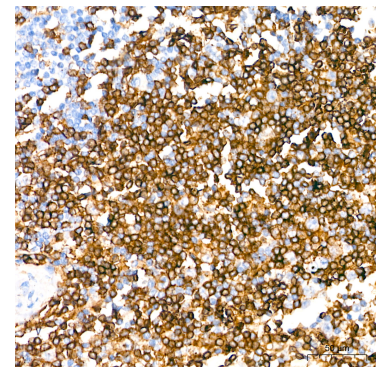
Western blot analysis of lysates from THP-1 cells using CD4 Rabbit PolymAb® (A26036) at 1:1000 dilution incubated overnight at 4°C.
Secondary antibody: HRP-conjugated Goat anti-Rabbit IgG (H+L) (AS014) at 1:10000 dilution.
Lysates/proteins: 25 µg per lane.
Blocking buffer: 3% nonfat dry milk in TBST.
Detection: ECL Basic Kit (RM00020).
Exposure time: 10s.



Confocal imaging of paraffin-embedded mouse spleen tissue using CD4 Rabbit PolymAb® (A26036, dilution 1:200) followed by a further incubation with Cy3 Goat Anti-Rabbit IgG (H+L) (AS007, dilution 1:500) (Red). DAPI was used for nuclear staining (Blue). High pressure antigen retrieval performed with 0.01M Citrate Buffer (pH 6.0) prior to IF staining. Objective: 40x.



Immunohistochemistry analysis of paraffin-embedded mouse spleen tissue using CD4 Rabbit PolymAb® (A26036) at a dilution of 1:800 (40x lens). High pressure antigen retrieval performed with 0.01M Citrate Buffer (pH 6.0) prior to IHC staining.



Immunohistochemistry analysis of paraffin-embedded human spleen tissue using CD4 Rabbit PolymAb® (A26036) at a dilution of 1:800 (40x lens). High pressure antigen retrieval performed with 0.01M Citrate Buffer (pH 6.0) prior to IHC staining.