

MHC Class II (I-A/I-E) Rat mAb

Catalog No.: A26039

Basic Information

Observed MW

Refer to figures

Calculated MW

26kDa/30kDa/32kDa

Category

Primary antibody

Applications

FC,ELISA

Cross-Reactivity

Mouse

CloneNo number

ATC50002

Background

Predicted to enable several functions, including MHC class II receptor activity; peptide antigen binding activity; and signaling receptor binding activity. Involved in response to interferon-gamma. Acts upstream of or within antigen processing and presentation of exogenous peptide antigen via MHC class II. Predicted to be located in external side of plasma membrane and immunological synapse. Predicted to be part of MHC class II protein complex. Predicted to be active in late endosome membrane and lysosomal membrane. Is expressed in lung. Human ortholog(s) of this gene implicated in several diseases, including asthma (multiple); autoimmune disease (multiple); bacterial infectious disease (multiple); eye disease (multiple); and sarcoidosis (multiple). Orthologous to human HLA-DRB1 (major histocompatibility complex, class II, DR beta 1) and HLA-DRB5 (major histocompatibility complex, class II, DR beta 5).

Recommended Dilutions

FC 1:500 - 1:1000

ELISA Recommended starting concentration is 1 µg/mL. Please optimize the concentration based on your specific assay requirements.

Immunogen Information

Gene ID

14969/14961/381091/14960

Swiss Prot

P18468/P06342/Q3U060/P14435

Immunogen

Recombinant protein (or fragment). This information is considered to be commercially sensitive.

Synonyms

Eb; Ia4; H2Eb; Ia-4; H-2Eb;IAb; Ia2; Ia-2; Abeta; H-2Ab; H2-Ab; Rmcs1; I-Abeta; Ia5; Ia-5; H-2Eb2; Iebeta2; A130038H09Rik; Ia1; H2Aa; Ia-1; H-2Aa; Aalpha; IAalpha; I-Aalpha

Contact

☎ | 400-999-6126

✉ | cn.market@abclonal.com.cn

🌐 | www.abclonal.com.cn

Product Information

Source

Rat

Isotype

IgG

Purification

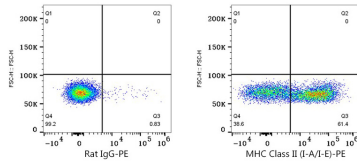
Affinity purification

Storage

Store at -20°C. Avoid freeze / thaw cycles.

Buffer: PBS containing 50% glycerol and 0.05% BSA, preserved with proclin300 or sodium azide (as specified on the Certificate of Analysis), pH 7.3.

Validation Data



Flow cytometry: 1×10^6 C57BL/6 mouse splenocytes were surface-stained with Rat IgG isotype control (2 $\mu\text{g}/\text{mL}$, left) or MHC Class II (I-A/I-E) Rat mAb (A26039, 2 $\mu\text{g}/\text{mL}$, right), followed by PE Goat anti-rat pAb staining.