

CD19 Rabbit mAb

Catalog No.: A26042 **Recombinant**

Basic Information

Observed MW

Refer to figures

Calculated MW

60kDa

Category

Primary antibody

Applications

IHC-P,IF/ICC,FC,(ELISA)

Cross-Reactivity

Human, Mouse

CloneNo number

ARC68235

Background

Involved in several processes, including B-1 B cell differentiation; positive regulation of phosphatidylinositol 3-kinase activity; and positive regulation of release of sequestered calcium ion into cytosol. Acts upstream of or within B cell receptor signaling pathway. Located in external side of plasma membrane. Is integral component of plasma membrane. Is expressed in liver and spleen. Human ortholog(s) of this gene implicated in common variable immunodeficiency. Orthologous to human CD19 (CD19 molecule).

Recommended Dilutions

IHC-P 1:500 - 1:1000

IF/ICC 1:50 - 1:200

FC 1:1000 - 1:2000

ELISA Recommended starting concentration is 1 µg/mL. Please optimize the concentration based on your specific assay requirements.

Immunogen Information

Gene ID

12478

Swiss Prot

P25918

Immunogen

Recombinant fusion protein containing a sequence corresponding to amino acids 19-287 of mouse CD19 (NP_033974.2).

Synonyms

Cd19

Contact

☎ | 400-999-6126

✉ | cn.market@abclonal.com.cn

🌐 | www.abclonal.com.cn

Product Information

Source

Rabbit

Isotype

IgG

Purification

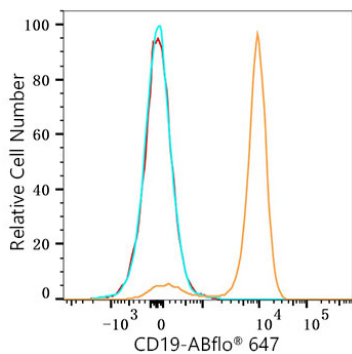
Affinity purification

Storage

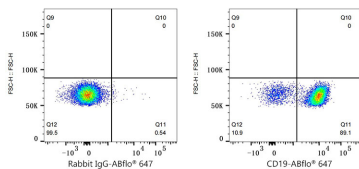
Store at -20°C. Avoid freeze / thaw cycles.

Buffer: PBS with 0.05% proclin300,0.05% BSA,50% glycerol,pH7.3.

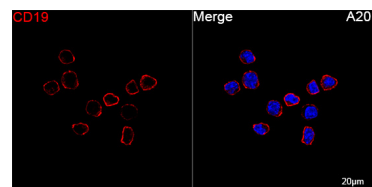
Validation Data



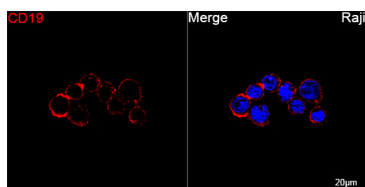
Flow cytometry: 1×10^6 C57BL/6 mouse splenocytes were surface-stained with CD19 Rabbit mAb (A26042, 2 $\mu\text{g}/\text{mL}$, orange line) or Rabbit IgG isotype control (AC042, 2 $\mu\text{g}/\text{mL}$, blue line), followed by Alexa Fluor® 647 conjugated goat anti-rabbit pAb staining. Non-fluorescently stained cells were used as blank control (red line).



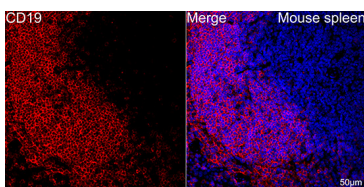
Flow cytometry: 1×10^6 C57BL/6 mouse splenocytes were surface-stained with Rabbit IgG isotype control (AC042, 2 $\mu\text{g}/\text{mL}$, left) or CD19 Rabbit mAb (A26042, 2 $\mu\text{g}/\text{mL}$, right), followed by Alexa Fluor® 647 conjugated goat anti-rabbit pAb staining.



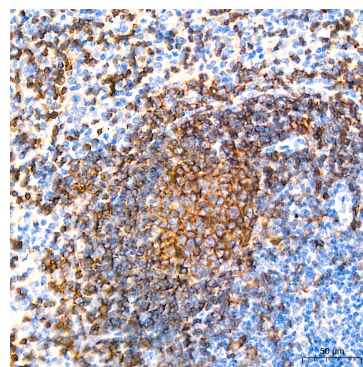
Confocal imaging of A20 cells using CD19 Rabbit mAb (A26042, dilution 1:200) followed by a further incubation with Cy3 Goat Anti-Rabbit IgG (H+L) (AS007, dilution 1:500) (Red). DAPI was used for nuclear staining (Blue). Objective: 100x.



Confocal imaging of Raji cells using CD19 Rabbit mAb (A26042, dilution 1:200) followed by a further incubation with Cy3 Goat Anti-Rabbit IgG (H+L) (AS007, dilution 1:500) (Red). DAPI was used for nuclear staining (Blue). Objective: 100x.



Confocal imaging of paraffin-embedded Mouse spleen tissue using CD19 Rabbit mAb (A26042, dilution 1:200) followed by a further incubation with Cy3 Goat Anti-Rabbit IgG (H+L) (AS007, dilution 1:500) (Red). DAPI was used for nuclear staining (Blue). High pressure antigen retrieval performed with 0.01M Citrate Buffer (pH 6.0) prior to IF staining. Objective: 40x.



Immunohistochemistry analysis of paraffin-embedded Mouse spleen tissue using CD19 Rabbit mAb (A26042) at a dilution of 1:800 (40x lens). High pressure antigen retrieval performed with 0.01M Citrate Buffer (pH 6.0) prior to IHC staining.