

APC Rabbit anti-Human CD161 mAb

Catalog No.: A26051

Basic Information

Observed MW

Calculated MW

25kDa

Category

Primary antibody

Applications

FC

Cross-Reactivity

Human

CloneNo number

ARC66022

Conjugate

APC. Ex:650nm. Em:660nm.

Background

Natural killer (NK) cells are lymphocytes that mediate cytotoxicity and secrete cytokines after immune stimulation. Several genes of the C-type lectin superfamily, including the rodent NKR1 family of glycoproteins, are expressed by NK cells and may be involved in the regulation of NK cell function. The KLRB1 protein contains an extracellular domain with several motifs characteristic of C-type lectins, a transmembrane domain, and a cytoplasmic domain. The KLRB1 protein is classified as a type II membrane protein because it has an external C terminus.

Recommended Dilutions

FC 5 μ l per 10^6 cells in
100 μ l volume

Immunogen Information

Gene ID

3820

Swiss Prot

Q12918

Immunogen

Recombinant protein (or fragment). This information is considered to be commercially sensitive.

Synonyms

NKR; CD161; CLEC5B; NKR-P1; NKR1A; NKR-P1A; hNKR-P1A

Contact

☎ | 400-999-6126

✉ | cn.market@abclonal.com.cn

🌐 | www.abclonal.com.cn

Product Information

Source

Rabbit

Isotype

IgG

Purification

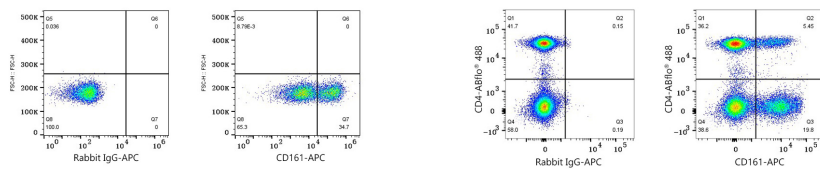
Affinity purification

Storage

Store at 2-8°C. Avoid freeze.

Buffer: PBS with 0.09% Sodium azide, 0.2% BSA, pH7.3.

Validation Data



Flow cytometry: 1×10^6 293T (Transfection) cells were surface-stained with APC Rabbit IgG isotype control (A24173,5 $\mu\text{l}/\text{Test}$,left) or APC Rabbit anti-Human CD161/KLRB1 mAb (A26051,5 $\mu\text{l}/\text{Test}$,right).

Flow cytometry: 1×10^6 Human PBMC were surface-stained with ABflo® 488 Rabbit anti-Human CD4 mAb (A26597,5 $\mu\text{l}/\text{Test}$) and APC Rabbit IgG isotype control (A24173,5 $\mu\text{l}/\text{Test}$,left) or APC Rabbit anti-Human CD161 mAb (A26051,5 $\mu\text{l}/\text{Test}$,right). Cells in the lymphocyte gate were used for analysis.