

PE Rabbit anti-Human CD161 mAb

Catalog No.: A26052

Basic Information

Observed MW

Calculated MW
25kDa

Category
Primary antibody

Applications
FC

Cross-Reactivity
Human

CloneNo number
ARC66022-PE

Conjugate
PE. Ex:565nm. Em:574nm.

Recommended Dilutions

FC 5 μ l per 10^6 cells in
100 μ l volume

Background

Natural killer (NK) cells are lymphocytes that mediate cytotoxicity and secrete cytokines after immune stimulation. Several genes of the C-type lectin superfamily, including the rodent NKR1 family of glycoproteins, are expressed by NK cells and may be involved in the regulation of NK cell function. The KLRB1 protein contains an extracellular domain with several motifs characteristic of C-type lectins, a transmembrane domain, and a cytoplasmic domain. The KLRB1 protein is classified as a type II membrane protein because it has an external C terminus.

Immunogen Information

Gene ID	Swiss Prot
3820	Q12918

Immunogen

Recombinant fusion protein containing a sequence corresponding to amino acids 67-225 of human CD161 (NP_002249.1).

Synonyms

NKR; CD161; CLEC5B; NKR-P1; NKR1A; NKR-P1A; hNKR-P1A

Contact

☎ | 400-999-6126

✉ | cn.market@abclonal.com.cn

🌐 | www.abclonal.com.cn

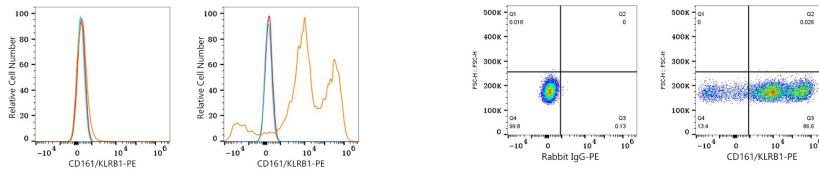
Product Information

Source	Isotype	Purification
Rabbit	IgG	Affinity purification

Storage

Store at 2-8°C. Avoid freeze.
Buffer: PBS with 0.09% Sodium azide, 0.2% BSA, pH7.3.

Validation Data



Flow cytometry: 1×10^6 293T cells (negative control, left) and 293T (Transfection, right) cells were surface-stained with PE Rabbit anti-Human CD161/KLRB1 mAb (A26052, 5 μ l/Test, orange line) or PE Rabbit IgG isotype control (A24172, 5 μ l/Test, blue line). Non-fluorescently stained cells were used as blank control (red line).

Flow cytometry: 1×10^6 293T (Transfection) cells were surface-stained with PE Rabbit IgG isotype control (A24172, 5 μ l/Test, left) or PE Rabbit anti-Human CD161/KLRB1 mAb (A26052, 5 μ l/Test, right).