

PE Rabbit anti-Mouse CD196/CCR6 mAb

Catalog No.: A26056

Basic Information

Observed MW

Refer to figures

Calculated MW

42kDa

Category

Primary antibody

Applications

FC

Cross-Reactivity

Mouse

CloneNo number

ARC66559

Conjugate

PE. Ex:565nm. Em:574nm.

Recommended Dilutions

FC 5 μ l per 10^6 cells in
100 μ l volume

Background

Enables C-C chemokine binding activity and C-C chemokine receptor activity. Involved in several processes, including immune system development; leukocyte migration; and regulation of cell motility. Located in external side of plasma membrane; sperm plasma membrane; and sperm principal piece. Is expressed in several structures, including central nervous system; gut; immune system; male reproductive gland or organ; and retina. Orthologous to human CCR6 (C-C motif chemokine receptor 6).

Immunogen Information

Gene ID

12458

Swiss Prot

O54689

Immunogen

Recombinant protein (or fragment). This information is considered to be commercially sensitive.

Synonyms

CCR-6; KY411; Cmkbr6; CC-CKR-6

Contact

 | 400-999-6126

 | cn.market@abclonal.com.cn

 | www.abclonal.com.cn

Product Information

Source

Rabbit

Isotype

IgG

Purification

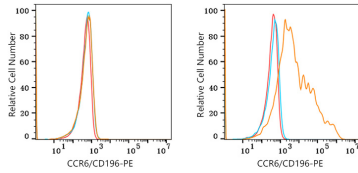
Affinity purification

Storage

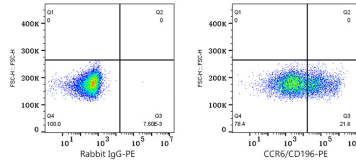
Store at 2-8°C. Avoid freeze.

Buffer: PBS with 0.09% Sodium azide, 0.2% BSA, pH7.3.

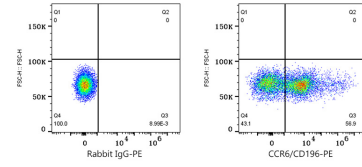
Validation Data



Flow cytometry: 1×10^6 293T cells (negative control, left) and 293T (Transfection, right) cells were surface-stained with PE Rabbit anti-Mouse CCR6/CD196 mAb (A26056, 5 μ l/Test, orange line) or PE Rabbit IgG isotype control (A24172, 5 μ l/Test, blue line). Non-fluorescently stained cells were used as blank control (red line).



Flow cytometry: 1×10^6 293T (Transfection) cells were surface-stained with PE Rabbit IgG isotype control (A24172, 5 μ l/Test, left) or PE Rabbit anti-Mouse CCR6/CD196 mAb (A26056, 5 μ l/Test, right).



Flow cytometry: 1×10^6 C57BL/6 mouse splenocytes were surface-stained with PE Rabbit IgG isotype control (A24172, 5 μ l/Test, left) or PE Rabbit anti-Mouse CCR6/CD196 mAb (A26056, 5 μ l/Test, right).