

CCR6/CD196 Rabbit mAb

Catalog No.: A26057 **Recombinant**

Basic Information

Observed MW

Refer to figures

Calculated MW

42kDa

Category

Primary antibody

Applications

FC,ELISA

Cross-Reactivity

Mouse

CloneNo number

ARC66559

Background

Enables C-C chemokine binding activity and C-C chemokine receptor activity. Involved in several processes, including immune system development; leukocyte migration; and regulation of cell motility. Located in external side of plasma membrane; sperm plasma membrane; and sperm principal piece. Is expressed in several structures, including central nervous system; gut; immune system; male reproductive gland or organ; and retina. Orthologous to human CCR6 (C-C motif chemokine receptor 6).

Recommended Dilutions

FC 1:500 - 1:1000

ELISA Recommended starting concentration is 1 µg/mL. Please optimize the concentration based on your specific assay requirements.

Immunogen Information

Gene ID

12458

Swiss Prot

O54689

Immunogen

Recombinant protein (or fragment). This information is considered to be commercially sensitive.

Synonyms

CCR-6; KY411; Cmkbr6; CC-CKR-6

Contact

☎ | 400-999-6126

✉ | cn.market@abclonal.com.cn

🌐 | www.abclonal.com.cn

Product Information

Source

Rabbit

Isotype

IgG

Purification

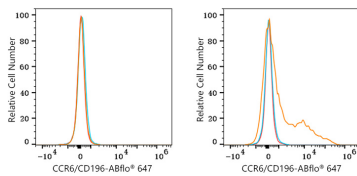
Affinity purification

Storage

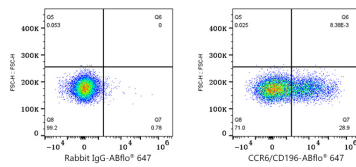
Store at -20°C. Avoid freeze / thaw cycles.

Buffer: PBS containing 50% glycerol and 0.05% BSA, preserved with proclin300 or sodium azide (as specified on the Certificate of Analysis), pH 7.3.

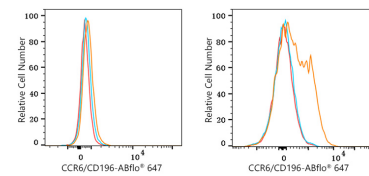
Validation Data



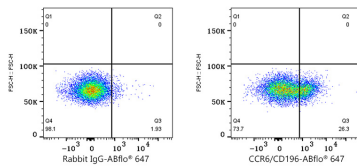
Flow cytometry: 1×10^6 293T cells (negative control, left) and 293T (Transfection, right) cells were surface-stained with CCR6/CD196 Rabbit mAb (A26057, 2 $\mu\text{g}/\text{mL}$, orange line) or Rabbit IgG isotype control (AC042, 2 $\mu\text{g}/\text{mL}$, blue line), followed by Alexa Fluor® 647 conjugated goat anti-rabbit pAb staining. Non-fluorescently stained cells were used as blank control (red line).



Flow cytometry: 1×10^6 293T (Transfection) cells were surface-stained with Rabbit IgG isotype control (AC042, 2 $\mu\text{g}/\text{mL}$, left) or CCR6/CD196 Rabbit mAb (A26057, 2 $\mu\text{g}/\text{mL}$, right), followed by Alexa Fluor® 647 conjugated goat anti-rabbit pAb staining.



Flow cytometry: 1×10^6 NIH/3T3 cells (negative control, left) and C57BL/6 mouse splenocytes (right) were surface-stained with CCR6/CD196 Rabbit mAb (A26057, 2 $\mu\text{g}/\text{mL}$, orange line) or Rabbit IgG isotype control (AC042, 2 $\mu\text{g}/\text{mL}$, blue line), followed by Alexa Fluor® 647 conjugated goat anti-rabbit pAb staining. Non-fluorescently stained cells were used as blank control (red line).



Flow cytometry: 1×10^6 C57BL/6 mouse splenocytes were surface-stained with Rabbit IgG isotype control (AC042, 2 $\mu\text{g}/\text{mL}$, left) or CCR6/CD196 Rabbit mAb (A26057, 2 $\mu\text{g}/\text{mL}$, right), followed by Alexa Fluor® 647 conjugated goat anti-rabbit pAb staining.