

# PE Rabbit anti-Mouse LAMP1/CD107a mAb

Catalog No.: A26061

## Basic Information

### Observed MW

### Calculated MW

43kDa

### Category

Primary antibody

### Applications

FC

### Cross-Reactivity

Mouse

### CloneNo number

ARC61633-PE

### Conjugate

PE. Ex:565nm. Em:574nm.

## Background

Enables protein domain specific binding activity. Involved in protein stabilization. Located in several cellular components, including cytoplasmic vesicle; sarcolemma; and vacuole. Is expressed in several structures, including 1-cell stage embryo; central nervous system; craniocervical region bone; extraembryonic component; and gut. Orthologous to human LAMP1 (lysosomal associated membrane protein 1).

## Recommended Dilutions

FC 5  $\mu$ l per  $10^6$  cells in  
100  $\mu$ l volume

## Immunogen Information

### Gene ID

16783

### Swiss Prot

P11438

### Immunogen

Recombinant fusion protein containing a sequence corresponding to amino acids 208-363 of mouse LAMP1/CD107a[NP\_034814.2].

### Synonyms

P2B; Perk; LGP-A; CD107a; Lamp-1; LGP-120

## Contact

☎ | 400-999-6126

✉ | [cn.market@abclonal.com.cn](mailto:cn.market@abclonal.com.cn)

🌐 | [www.abclonal.com.cn](http://www.abclonal.com.cn)

## Product Information

### Source

Rabbit

### Isotype

IgG

### Purification

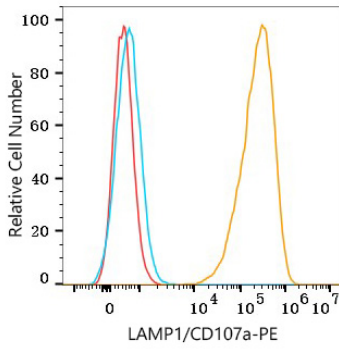
Affinity purification

### Storage

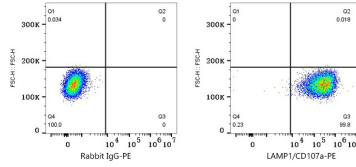
Store at 2-8°C. Avoid freeze.

Buffer: PBS with 0.09% Sodium azide, 0.2% BSA, pH7.3.

## Validation Data



Flow cytometry:  $1 \times 10^6$  RAW264.7 cells were surface-stained with PE Rabbit anti-Mouse LAMP1/CD107a mAb (A26061,5  $\mu\text{l}/\text{Test}$ , orange line) or PE Rabbit IgG isotype control (A24172,5  $\mu\text{l}/\text{Test}$ , blue line). Non-fluorescently stained cells were used as blank control (red line).



Flow cytometry:  $1 \times 10^6$  RAW264.7 cells were surface-stained with PE Rabbit IgG isotype control (A24172,5  $\mu\text{l}/\text{Test}$ , left) or PE Rabbit anti-Mouse LAMP1/CD107a mAb (A26061,5  $\mu\text{l}/\text{Test}$ , right).