

PE Rabbit anti-Mouse Ly-6A/E (Sca-1) mAb

Catalog No.: A26064

Basic Information

Observed MW

Refer to figures

Calculated MW

114kDa

Category

Primary antibody

Applications

FC

Cross-Reactivity

Mouse

CloneNo number

ARC57786-PE

Conjugate

PE. Ex:565nm. Em:574nm.

Recommended Dilutions

FC 5 μ l per 10^6 cells in
100 μ l volume

Background

T-cell activation. Predicted to enable acetylcholine receptor binding activity and acetylcholine receptor inhibitor activity. Acts upstream of or within response to bacterium. Located in external side of plasma membrane. Is expressed in alimentary system; hindlimb tendon; liver; metanephros; and physiological umbilical hernia. Used to study osteoporosis. Orthologous to human LY6H (lymphocyte antigen 6 family member H).

Immunogen Information

Gene ID

110454

Swiss Prot

P05533

Immunogen

Recombinant fusion protein containing a sequence corresponding to amino acids 27-111 of mouse Ly-6A/E (Sca-1)(NP_034868.1)

Synonyms

TAP; Sca1; Sca-1; Ly-6A.2; Ly-6A/E; Ly-6E.1

Contact

☎ | 400-999-6126

✉ | cn.market@abclonal.com.cn

🌐 | www.abclonal.com.cn

Product Information

Source

Rabbit

Isotype

IgG

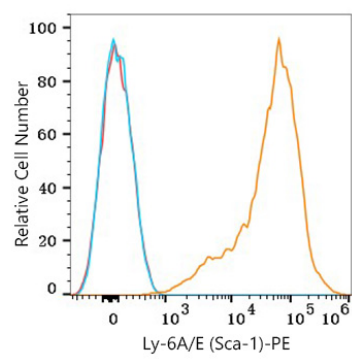
Purification

Affinity purification

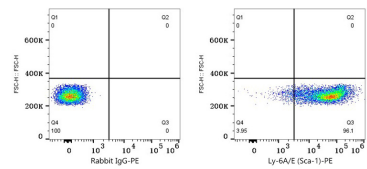
Storage

Store at 2-8°C. Avoid freeze.

Buffer: PBS with 0.09% Sodium azide, 0.2% BSA, pH7.3.



Flow cytometry: 1X10⁶ C57BL/6 mouse splenocytes were surface-stained with PE Rabbit anti-Mouse Ly-6A/E (Sca-1) mAb (A26064,5 µl/Test,orange line) or PE Rabbit IgG isotype control (A24172,5 µl/Test,blue line). Non-fluorescently stained cells were used as blank control (red line).



Flow cytometry: 1X10⁶ C57BL/6 mouse splenocytes were surface-stained with PE Rabbit Ig isotype control (A24172,5 µl/Test,left) or PE Rabbit anti-Mouse Ly-6A/E (Sca-1) mAb (A26064,5 µl/Test,right).