

ABflo® 450 Rabbit anti-Mouse LAMP1/CD107a mAb

Catalog No.: A26069

Basic Information

Observed MW

Calculated MW

43kDa

Category

Primary antibody

Applications

FC

Cross-Reactivity

Mouse

CloneNo number

ARC61633-ABflo450

Conjugate

ABflo® 450. Ex:406nm. Em:445nm.

Recommended Dilutions

FC 5 µl per 10⁶ cells in
100 µl volume

Background

Enables protein domain specific binding activity. Involved in protein stabilization. Located in several cellular components, including cytoplasmic vesicle; sarcolemma; and vacuole. Is expressed in several structures, including 1-cell stage embryo; central nervous system; craniocervical region bone; extraembryonic component; and gut. Orthologous to human LAMP1 (lysosomal associated membrane protein 1).

Immunogen Information

Gene ID

16783

Swiss Prot

P11438

Immunogen

Recombinant fusion protein containing a sequence corresponding to amino acids 208-363 of mouse LAMP1/CD107a[NP_034814.2].

Synonyms

P2B; Perk; LGP-A; CD107a; Lamp-1; LGP-120

Contact

☎ | 400-999-6126

✉ | cn.market@abclonal.com.cn

🌐 | www.abclonal.com.cn

Product Information

Source

Rabbit

Isotype

IgG

Purification

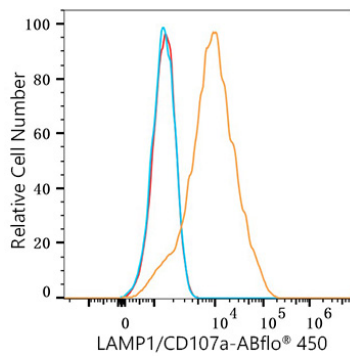
Affinity purification

Storage

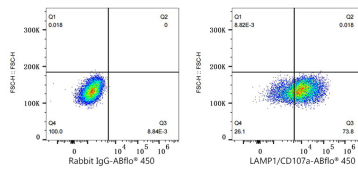
Store at 2-8°C. Avoid freeze.

Buffer: PBS with 0.03% proclin300,0.2% BSA,pH7.3.

Validation Data



Flow cytometry: 1X10⁶ RAW264.7 cells were surface-stained with ABflo® 450 Rabbit anti-Mouse LAMP1/CD107a mAb (A26069, 5 µl/Test, orange line) or ABflo® 450 Rabbit IgG isotype control (5 µl/Test, blue line). Non-fluorescently stained cells were used as blank control (red line).



Flow cytometry: 1X10⁶ RAW264.7 cells were surface-stained with ABflo® 450 Rabbit IgG isotype control (5 µl/Test, left) or ABflo® 450 Rabbit anti-Mouse LAMP1/CD107a mAb (A26069, 5 µl/Test, right).