

YAP1 Rabbit mAb

Catalog No.: A26076

Recombinant

1 Publications

Basic Information

Observed MW

65-78kDa

Calculated MW

52kDa/50kDa

Category

Primary antibody

Applications

WB,IHC-P,IF/ICC,ELISA

Cross-Reactivity

Human, Mouse, Rat

CloneNo number

ARC67894

Background

This gene encodes a protein which binds to the SH3 domain of the Yes proto-oncogene product, a tyrosine kinase. This protein contains a WW domain, consisting of four conserved aromatic amino acids including two tryptophan residues. This conserved WW domain is found in various structural, regulatory and signaling molecules in various species, and may play a role in protein-protein interaction. Following cellular damage, phosphorylation of this encoded protein may suppress apoptosis. This protein may be involved in malignant transformation in cancer. Alternative splicing results in multiple transcript variants.

Recommended Dilutions

WB 1:1000 - 1:6000

IHC-P 1:200 - 1:800

IF/ICC 1:50 - 1:200

ELISA Recommended starting concentration is 1 µg/mL. Please optimize the concentration based on your specific assay requirements.

Immunogen Information

Gene ID

22601

Swiss Prot

P46938

Immunogen

Recombinant protein (or fragment). This information is considered to be commercially sensitive.

Synonyms

Yap; Yki; Yap65; Yorkie

Contact

 | 400-999-6126 | cn.market@abclonal.com.cn | www.abclonal.com.cn

Product Information

Source

Rabbit

Isotype

IgG

Purification

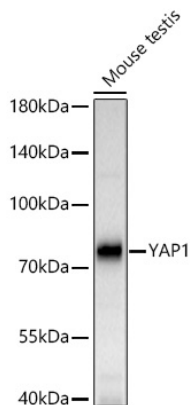
Affinity purification

Storage

Store at -20°C. Avoid freeze / thaw cycles.

Buffer: PBS with 0.09% Sodium azide, 0.05% BSA, 50% glycerol, pH7.3.

Validation Data



Western blot analysis of lysates from Mouse testis using YAP1 Rabbit mAb (A26076) at 1:1000 dilution incubated overnight at 4°C.

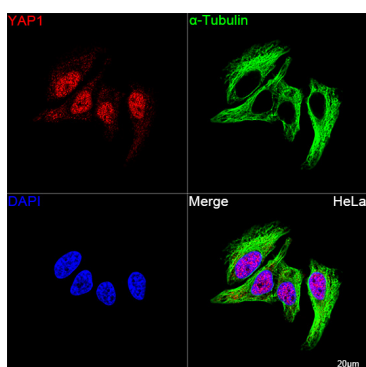
Secondary antibody: HRP-conjugated Goat anti-Rabbit IgG (H+L) (AS014) at 1:10000 dilution.

Lysates/proteins: 25 µg per lane.

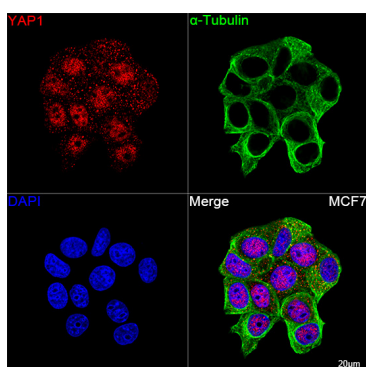
Blocking buffer: 3% nonfat dry milk in TBST.

Detection: ECL Basic Kit (RM00020).

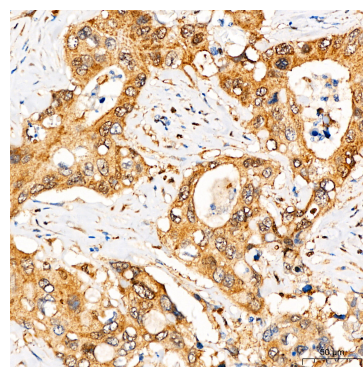
Exposure time: 10s.



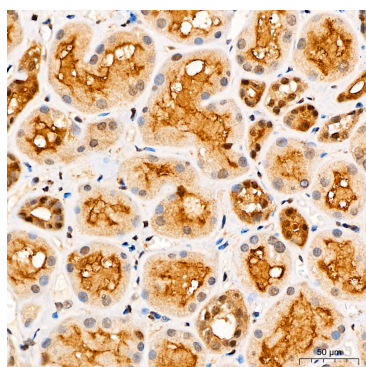
Confocal imaging of HeLa cells using YAP1 Rabbit mAb (A26076, dilution 1:200) followed by a further incubation with Cy3 Goat Anti-Rabbit IgG (H+L) (AS007, dilution 1:500) (Red). The cells were counterstained with α -Tubulin Mouse mAb (AC012, dilution 1:400) followed by incubation with ABflo® 488-conjugated Goat Anti-Mouse IgG (H+L) Ab (AS076, dilution 1:500) (Green). DAPI was used for nuclear staining (Blue). Objective: 100x.



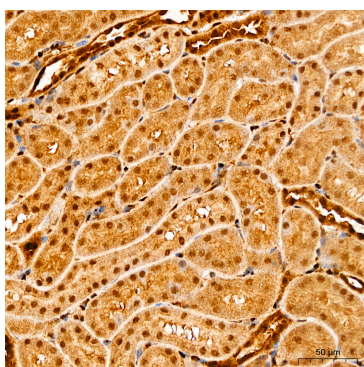
Confocal imaging of MCF7 cells using YAP1 Rabbit mAb (A26076, dilution 1:200) followed by a further incubation with Cy3 Goat Anti-Rabbit IgG (H+L) (AS007, dilution 1:500) (Red). The cells were counterstained with α -Tubulin Mouse mAb (AC012, dilution 1:400) followed by incubation with ABflo® 488-conjugated Goat Anti-Mouse IgG (H+L) Ab (AS076, dilution 1:500) (Green). DAPI was used for nuclear staining (Blue). Objective: 100x.



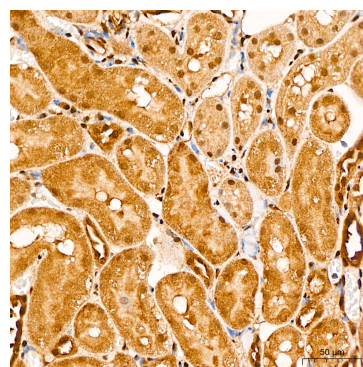
Immunohistochemistry analysis of paraffin-embedded Human colon carcinoma tissue using YAP1 Rabbit mAb (A26076) at a dilution of 1:300 (40x lens). High pressure antigen retrieval performed with 0.01M Citrate Buffer(pH 6.0) prior to IHC staining.



Immunohistochemistry analysis of paraffin-embedded Human kidney tissue using YAP1 Rabbit mAb (A26076) at a dilution of 1:300 (40x lens). High pressure antigen retrieval performed with 0.01M Citrate Buffer(pH 6.0) prior to IHC staining.



Immunohistochemistry analysis of paraffin-embedded Mouse kidney tissue using YAP1 Rabbit mAb (A26076) at a dilution of 1:300 (40x lens). High pressure antigen retrieval performed with 0.01M Citrate Buffer(pH 6.0) prior to IHC staining.



Immunohistochemistry analysis of paraffin-embedded Rat kidney tissue using YAP1 Rabbit mAb (A26076) at a dilution of 1:300 (40x lens). High pressure antigen retrieval performed with 0.01M Citrate Buffer(pH 6.0) prior to IHC staining.