

# MMP9 Rabbit mAb

Catalog No.: A26079 **Recombinant**

## Basic Information

### Observed MW

100-110kDa

### Calculated MW

81kDa

### Category

Primary antibody

### Applications

ELISA, WB, IHC-P

### Cross-Reactivity

Human, Mouse

### CloneNo number

ARC68604

## Background

This gene encodes a member of the matrix metalloproteinase family of extracellular matrix-degrading enzymes that are involved in tissue remodeling, wound repair, progression of atherosclerosis and tumor invasion. The encoded preproprotein undergoes proteolytic processing to generate a mature, zinc-dependent endopeptidase enzyme that degrades collagens of type IV, V and XI, and elastin. Mice lacking the encoded protein exhibit an abnormal pattern of skeletal growth plate vascularization and ossification, reduced keratinocyte hyperproliferation at all neoplastic stages, a decreased incidence of invasive tumors, and resistance to experimental autoimmune encephalomyelitis.

## Recommended Dilutions

**WB** 1:500 - 1:1000

**IHC-P** 1:50 - 1:200

## Immunogen Information

### Gene ID

17395

### Swiss Prot

P41245

### Immunogen

Recombinant fusion protein containing a sequence corresponding to amino acids 108-730 of mouse MMP9(NP\_038627.1).

### Synonyms

Clg4b; Gel B; MMP-9; B/MMP9; pro-MMP-9

## Contact

☎ | 400-999-6126

✉ | [cn.market@abclonal.com.cn](mailto:cn.market@abclonal.com.cn)

🌐 | [www.abclonal.com.cn](http://www.abclonal.com.cn)

## Product Information

### Source

Rabbit

### Isotype

IgG

### Purification

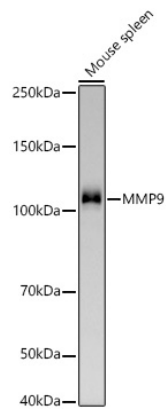
Affinity purification

### Storage

Store at -20°C. Avoid freeze / thaw cycles.

Buffer: PBS with 0.09% Sodium azide, 0.05% BSA, 50% glycerol, pH7.3.

## Validation Data



Western blot analysis of lysates from Mouse spleen using MMP9 Rabbit mAb (A26079) at 1:1000 dilution incubated overnight at 4°C.

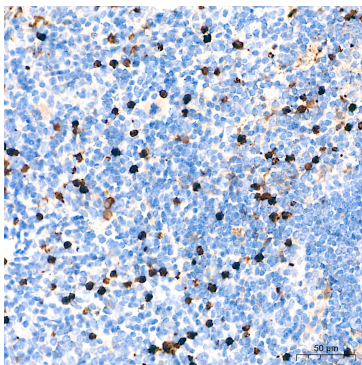
Secondary antibody: HRP-conjugated Goat anti-Rabbit IgG (H+L) (AS014) at 1:10000 dilution.

Lysates/proteins: 25 µg per lane.

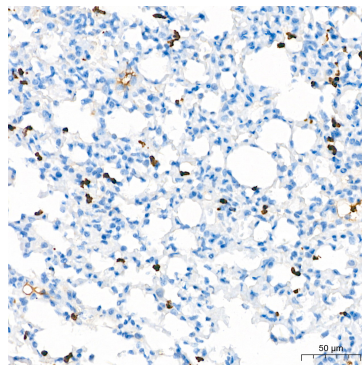
Blocking buffer: 3% nonfat dry milk in TBST.

Detection: ECL Basic Kit (RM00020).

Exposure time: 45s.



Immunohistochemistry analysis of paraffin-embedded Mouse spleen tissue using MMP9 Rabbit mAb (A26079) at a dilution of 1:200 (40x lens). High pressure antigen retrieval performed with 0.01M Citrate Buffer(pH 6.0) prior to IHC staining.



Immunohistochemistry analysis of paraffin-embedded Mouse lung tissue using MMP9 Rabbit mAb (A26079) at a dilution of 1:200 (40x lens). High pressure antigen retrieval performed with 0.01M Citrate Buffer(pH 6.0) prior to IHC staining.