

Syndecan 4 Rabbit mAb

Catalog No.: A26116 **Recombinant**

Basic Information

Observed MW

29kDa

Calculated MW

22kDa

Category

Primary antibody

Applications

ELISA,WB,IF/ICC,FC

Cross-Reactivity

Human, Mouse, Rat

CloneNo number

ARC66675

Background

The protein encoded by this gene is a transmembrane (type I) heparan sulfate proteoglycan that functions as a receptor in intracellular signaling. The encoded protein is found as a homodimer and is a member of the syndecan proteoglycan family. This gene is found on chromosome 20, while a pseudogene has been found on chromosome 22.

Recommended Dilutions

WB	1:500 - 1:1000
IF/ICC	1:50 - 1:200
FC	1:500 - 1:1000

Immunogen Information

Gene ID

6385

Swiss Prot

P31431

Immunogen

Recombinant fusion protein containing a sequence corresponding to amino acids 19-145 of human Syndecan 4 (NP_002990.2).

Synonyms

SYND4

Contact

☎ | 400-999-6126

✉ | cn.market@abclonal.com.cn

🌐 | www.abclonal.com.cn

Product Information

Source

Rabbit

Isotype

IgG

Purification

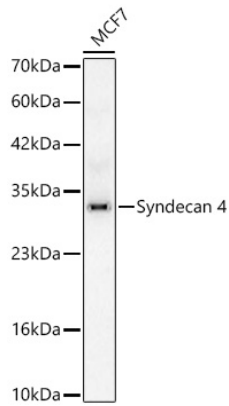
Affinity purification

Storage

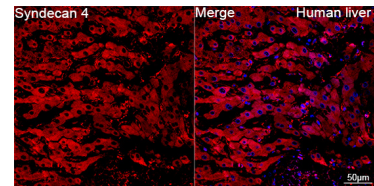
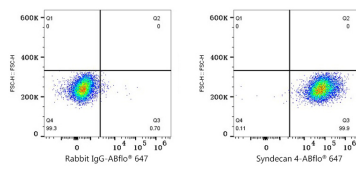
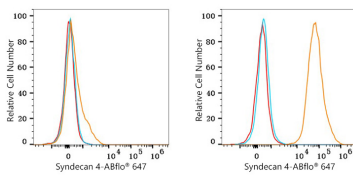
Store at -20°C. Avoid freeze / thaw cycles.

Buffer: PBS with 0.09% Sodium azide,0.05% BSA,50% glycerol,pH7.3

Validation Data



Western blot analysis of lysates from MCF7 cells using Syndecan 4 Rabbit mAb (A26116) at 1:1000 dilution incubated overnight at 4°C.
 Secondary antibody: HRP-conjugated Goat anti-Rabbit IgG (H+L) (AS014) at 1:10000 dilution.
 Lysates/proteins: 25 µg per lane.
 Blocking buffer: 3% nonfat dry milk in TBST.
 Detection: ECL Basic Kit (RM00020).
 Exposure time: 90s.



Flow cytometry: 1×10^6 MOLT-4 cells (negative control, left) and RT4 cells (right) were surface-stained with Syndecan 4 Rabbit mAb (A26116, 2 µg/mL, orange line) or Rabbit IgG isotype control (AC042, 2 µg/mL, blue line), followed by Alexa Fluor® 647 conjugated goat anti-rabbit pAb. Non-fluorescently stained cells were used as blank control (red line).

Flow cytometry: 1×10^6 RT4 cells were surface-stained with Rabbit IgG isotype control (AC042, 2 µg/mL, left) or Syndecan 4 Rabbit mAb (A26116, 2 µg/mL, right), followed by Alexa Fluor® 647 conjugated goat anti-rabbit pAb staining.

Confocal imaging of paraffin-embedded Human liver tissue using Syndecan 4 Rabbit mAb (A26116, dilution 1:200) followed by a further incubation with Cy3 Goat Anti-Rabbit IgG (H+L) (AS007, dilution 1:500) (Red). DAPI was used for nuclear staining (Blue). High pressure antigen retrieval performed with 0.01M Citrate Buffer (pH 6.0) prior to IF staining. Objective: 40x.