

# PE Rabbit anti-Human CD86 mAb

Catalog No.: A26125

## Basic Information

### Observed MW

Refer to figures

### Calculated MW

38kDa

### Category

Primary antibody

### Applications

FC

### Cross-Reactivity

Human

### CloneNo number

ARC54012-PE

### Conjugate

PE. Ex:565nm. Em:574nm.

## Recommended Dilutions

FC 5  $\mu$ l per  $10^6$  cells in  
100  $\mu$ l volume

## Background

This gene encodes a type I membrane protein that is a member of the immunoglobulin superfamily. This protein is expressed by antigen-presenting cells, and it is the ligand for two proteins at the cell surface of T cells, CD28 antigen and cytotoxic T-lymphocyte-associated protein 4. Binding of this protein with CD28 antigen is a costimulatory signal for activation of the T-cell. Binding of this protein with cytotoxic T-lymphocyte-associated protein 4 negatively regulates T-cell activation and diminishes the immune response. Alternative splicing results in several transcript variants encoding different isoforms.

## Immunogen Information

### Gene ID

942

### Swiss Prot

P42081

### Immunogen

Recombinant fusion protein containing a sequence corresponding to amino acids 20-241 of human CD86 (NP\_787058.5).

### Synonyms

B70; B7-2; B7.2; LAB72; CD28LG2

## Contact

☎ | 400-999-6126

✉ | [cn.market@abclonal.com.cn](mailto:cn.market@abclonal.com.cn)

🌐 | [www.abclonal.com.cn](http://www.abclonal.com.cn)

## Product Information

### Source

Rabbit

### Isotype

IgG

### Purification

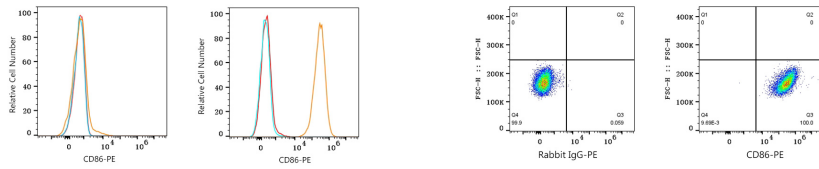
Affinity purification

### Storage

Store at 2-8°C. Avoid freeze.

Buffer: PBS with 0.09% Sodium azide, 0.2% BSA, pH7.3.

## Validation Data



Flow cytometry:  $1 \times 10^6$  K-562 cells (negative control, left) and Raji cells (right) were surface-stained with PE Rabbit anti-Human CD86 mAb (A26125, 5  $\mu$ l/Test, orange line) or PE Rabbit IgG isotype control (A24172, 5  $\mu$ l/Test, blue line). Non-fluorescently stained cells were used as blank control (red line).

Flow cytometry:  $1 \times 10^6$  Raji cells were surface-stained with PE Rabbit IgG isotype control (A24172, 5  $\mu$ l/Test, left) or PE Rabbit anti-Human CD86 mAb (A26125, 5  $\mu$ l/Test, right).