

APC Rabbit anti-Human Glypican 3 (GPC3) mAb

Catalog No.: A26131

Basic Information

Observed MW

Calculated MW

66kDa

Category

Primary antibody

Applications

FC

Cross-Reactivity

Human

CloneNo number

ARC56916-APC

Conjugate

APC. Ex:650nm. Em:660nm.

Recommended Dilutions

FC 5 μ l per 10^6 cells in
100 μ l volume

Background

Cell surface heparan sulfate proteoglycans are composed of a membrane-associated protein core substituted with a variable number of heparan sulfate chains. Members of the glypican-related integral membrane proteoglycan family (GRIPS) contain a core protein anchored to the cytoplasmic membrane via a glycosyl phosphatidylinositol linkage. These proteins may play a role in the control of cell division and growth regulation. The protein encoded by this gene can bind to and inhibit the dipeptidyl peptidase activity of CD26, and it can induce apoptosis in certain cell types. Deletion mutations in this gene are associated with Simpson-Golabi-Behmel syndrome, also known as Simpson dysmorphia syndrome. Alternative splicing results in multiple transcript variants.

Immunogen Information

Gene ID

2719

Swiss Prot

P51654

Immunogen

A synthetic peptide corresponding to a sequence within amino acids 481-580 of human Glypican 3 (GPC3) (NP_004475.1).

Synonyms

SGB; DGSX; MXR7; SDYS; SGBS; OCI-5; SGBS1; GTR2-2

Contact

☎ | 400-999-6126

✉ | cn.market@abclonal.com.cn

🌐 | www.abclonal.com.cn

Product Information

Source

Rabbit

Isotype

IgG

Purification

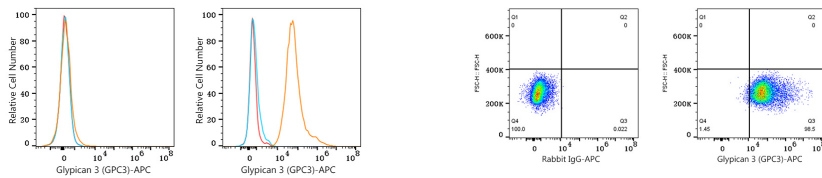
Affinity purification

Storage

Store at 2-8°C. Avoid freeze.

Buffer: PBS with 0.09% Sodium azide, 0.2% BSA, pH7.3.

Validation Data



Flow cytometry: 1×10^6 K-562 cells (negative control, left) and Hep G2 cells (right) were surface-stained with APC Rabbit anti-Human Glypican 3 (GPC3) mAb (A26131, 5 μ l/Test, orange line) or APC Rabbit IgG isotype control (A24173, 5 μ l/Test, blue line). Non-fluorescently stained cells were used as blank control (red line).

Flow cytometry: 1×10^6 Hep G2 cells were surface-stained with APC Rabbit IgG isotype control (A24173, 5 μ l/Test, left) or APC Rabbit anti-Human Glypican 3 (GPC3) mAb (A26131, 5 μ l/Test, right).