

# APC Rabbit anti-Human CD1B mAb

**Catalog No.: A26132**

## Basic Information

### Observed MW

Refer to figures

### Calculated MW

37kDa/30kDa

### Category

Primary antibody

### Applications

FC

### Cross-Reactivity

Human

### CloneNo number

ARC66962-APC

### Conjugate

APC. Ex:650nm. Em:660nm.

## Recommended Dilutions

**FC**                      5  $\mu$ l per  $10^6$  cells in  
100  $\mu$ l volume

## Background

This gene encodes a member of the CD1 family of transmembrane glycoproteins, which are structurally related to the major histocompatibility complex (MHC) proteins and form heterodimers with beta-2-microglobulin. The CD1 proteins mediate the presentation of primarily lipid and glycolipid antigens of self or microbial origin to T cells. The human genome contains five CD1 family genes organized in a cluster on chromosome 1. The CD1 family members are thought to differ in their cellular localization and specificity for particular lipid ligands. The protein encoded by this gene localizes to late endosomes and lysosomes via a tyrosine-based motif in the cytoplasmic tail, and requires vesicular acidification to bind lipid antigens.

## Immunogen Information

### Gene ID

910

### Swiss Prot

P29016

### Immunogen

Recombinant fusion protein containing a sequence corresponding to amino acids 18-303 of human CD1B (NP\_001755.1).


### Synonyms

R1; CD1; CD1A

## Contact

 | 400-999-6126

 | [cn.market@abclonal.com.cn](mailto:cn.market@abclonal.com.cn)

 | [www.abclonal.com.cn](http://www.abclonal.com.cn)

## Product Information

### Source

Rabbit

### Isotype

IgG

### Purification

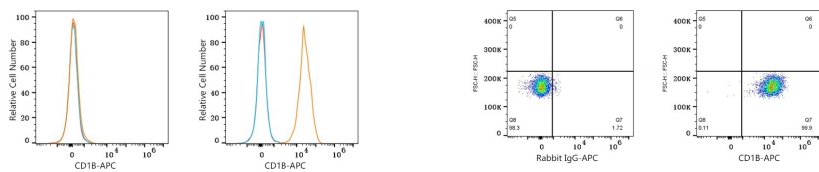
Affinity purification

### Storage

Store at 2-8°C. Avoid freeze.

Buffer: PBS with 0.09% Sodium azide, 0.2% BSA, pH7.3.

## Validation Data



Flow cytometry:  $1 \times 10^6$  K-562 cells (negative control, left) and MOLT-4 cells (right) were surface-stained with APC Rabbit anti-Human CD1B mAb (A26132, 5  $\mu$ l/Test, orange line) or APC Rabbit IgG isotype control (A24173, 5  $\mu$ l/Test, blue line). Non-fluorescently stained cells were used as blank control (red line).

Flow cytometry:  $1 \times 10^6$  MOLT-4 cells were surface-stained with APC Rabbit IgG isotype control (A24173, 5  $\mu$ l/Test, left) or APC Rabbit anti-Human CD1B mAb (A26132, 5  $\mu$ l/Test, right).