

# FITC Rabbit anti-Mouse CD32 mAb

Catalog No.: A26136

## Basic Information

### Observed MW

Refer to figures

### Calculated MW

31kDa/33kDa/36kDa

### Category

Primary antibody

### Applications

FC

### Cross-Reactivity

Mouse

### CloneNo number

ARC68229

### Conjugate

FITC. Ex:491nm. Em:516nm.

## Recommended Dilutions

**FC** 5  $\mu$ l per  $10^6$  cells in  
100  $\mu$ l volume

## Background

CD32 (Fc $\gamma$ r2) is a 40 kD transmembrane glycoprotein, member of the immunoglobulin superfamily. The extracellular region of CD32 consists of two Ig C-type domains that binds the Fc region from monomeric IgG with low affinity, but binds immune complexes efficiently. CD32 can mediate phagocytosis of immune complexes and modulate cell activation. CD32 is expressed by Macrophages, neutrophils, mast cells and B cells.

## Immunogen Information

### Gene ID

14130

### Swiss Prot

P08101

### Immunogen

Recombinant protein (or fragment). This information is considered to be commercially sensitive.

### Synonyms

CD32; Fc $\gamma$ r2; Fc $\gamma$ -2; Fc $\gamma$ -3; Ly-17; LyM-1; Lym-1; fcRII; Fc $\gamma$ RII; Fc $\gamma$ 2a; Ly-m20; Fc[g]RII; F630109E10Rik

## Contact

 | 400-999-6126

 | [cn.market@abclonal.com.cn](mailto:cn.market@abclonal.com.cn)

 | [www.abclonal.com.cn](http://www.abclonal.com.cn)

## Product Information

### Source

Rabbit

### Isotype

IgG

### Purification

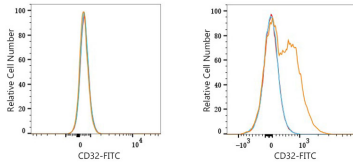
Affinity purification

### Storage

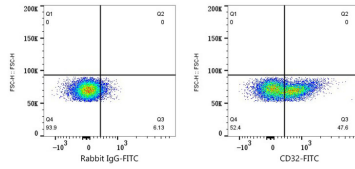
Store at 2-8°C. Avoid freeze.

Buffer: PBS containing 0.2% BSA, preserved with proclin300 or sodium azide (as specified on the Certificate of Analysis), pH 7.3.

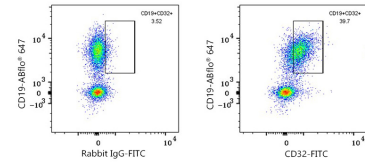
## Validation Data



Flow cytometry:  $1 \times 10^6$  bEnd.3 cells (negative control, left) and C57BL/6 mouse splenocytes (right) were surface-stained with FITC Rabbit anti-Mouse CD32 mAb (A26136, 5  $\mu$ l/Test, orange line) or FITC Rabbit IgG isotype control (A25616, 5  $\mu$ l/Test, blue line). Non-fluorescently stained cells were used as blank control (red line).



Flow cytometry:  $1 \times 10^6$  C57BL/6 mouse splenocytes were surface-stained with FITC Rabbit IgG isotype control (A25616, 5  $\mu$ l/Test, left) or FITC Rabbit anti-Mouse CD32 mAb (A26136, 5  $\mu$ l/Test, right).



Flow cytometry:  $1 \times 10^6$  C57BL/6 mouse splenocytes were surface-stained with ABR® 647 Rabbit anti-Mouse CD19 mAb (A24101, 5  $\mu$ l/Test) and FITC Rabbit anti-Mouse CD32 mAb (A26136, 5  $\mu$ l/Test, right) or FITC Rabbit IgG isotype control (A25616, 5  $\mu$ l/Test, left).