

# PE Rabbit anti-Mouse CD32 mAb

Catalog No.: A26142

## Basic Information

### Observed MW

Refer to figures

### Calculated MW

31kDa/33kDa/36kDa

### Category

Primary antibody

### Applications

FC

### Cross-Reactivity

Mouse

### CloneNo number

ARC68229-PE

### Conjugate

PE. Ex:565nm. Em:574nm.

## Recommended Dilutions

**FC** 5  $\mu$ l per  $10^6$  cells in  
100  $\mu$ l volume

## Background

CD32 (Fc $\gamma$ r2) is a 40 kD transmembrane glycoprotein, member of the immunoglobulin superfamily. The extracellular region of CD32 consists of two Ig C-type domains that binds the Fc region from monomeric IgG with low affinity, but binds immune complexes efficiently. CD32 can mediate phagocytosis of immune complexes and modulate cell activation. CD32 is expressed by Macrophages, neutrophils, mast cells and B cells.

## Immunogen Information

### Gene ID

14130

### Swiss Prot

P08101

### Immunogen

Recombinant fusion protein containing a sequence corresponding to amino acids 30-207 of mouse CD32 (NP\_034317.1).

### Synonyms

CD32; Fc $\gamma$ r2; Fcr-2; Fcr-3; Ly-17; LyM-1; Lym-1; fcRII; Fc $\gamma$ RII; Fc $\gamma$ r2a; Ly-m20; Fc[g]RII; F630109E10Rik

## Contact

☎ | 400-999-6126

✉ | [cn.market@abclonal.com.cn](mailto:cn.market@abclonal.com.cn)

🌐 | [www.abclonal.com.cn](http://www.abclonal.com.cn)

## Product Information

### Source

Rabbit

### Isotype

IgG

### Purification

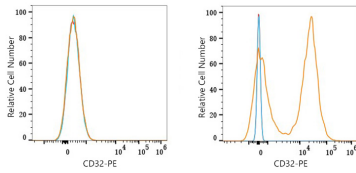
Affinity purification

### Storage

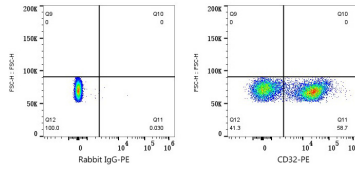
Store at 2-8°C. Avoid freeze.

Buffer: PBS with 0.09% Sodium azide, 0.2% BSA, pH7.3.

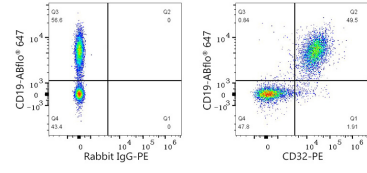
## Validation Data



Flow cytometry:  $1 \times 10^6$  bEnd.3 cells (negative control, left) and C57BL/6 mouse splenocytes (right) were surface-stained with PE Rabbit anti-Mouse CD32 mAb (A26142, 5  $\mu$ l/Test, orange line) or PE Rabbit IgG isotype control (A24172, 5  $\mu$ l/Test, blue line). Non-fluorescently stained cells were used as blank control (red line).



Flow cytometry:  $1 \times 10^6$  C57BL/6 mouse splenocytes were surface-stained with PE Rabbit IgG isotype control (A24172, 5  $\mu$ l/Test, left) or PE Rabbit anti-Mouse CD32 mAb (A26142, 5  $\mu$ l/Test, right).



Flow cytometry:  $1 \times 10^6$  C57BL/6 mouse splenocytes were surface-stained with ABflo® 647 Rabbit anti-Mouse CD19 mAb (A24101, 5  $\mu$ l/Test) and PE Rabbit anti-Mouse CD32 mAb (A26142, 5  $\mu$ l/Test, right) or PE Rabbit IgG isotype control (A27142, 5  $\mu$ l/Test, left).