

ZNF683 Rabbit pAb

Catalog No.: A26154

Basic Information

Observed MW

57kDa

Calculated MW

57kDa

Category

Primary antibody

Applications

WB, ELISA

Cross-Reactivity

Human

Background

Enables RNA polymerase II cis-regulatory region sequence-specific DNA binding activity. Involved in T cell receptor signaling pathway; cellular response to ionomycin; and regulation of gene expression. Predicted to be located in nucleus.

Recommended Dilutions

WB 1:500 - 1:1000

ELISA Recommended starting concentration is 1 µg/mL. Please optimize the concentration based on your specific assay requirements.

Immunogen Information

Gene ID

257101

Swiss Prot

Q8IZ20

Immunogen

Recombinant protein (or fragment). This information is considered to be commercially sensitive.

Synonyms

Hobit; ZNF683

Contact

 | 400-999-6126

 | cn.market@abclonal.com.cn

 | www.abclonal.com.cn

Product Information

Source

Rabbit

Isotype

IgG

Purification

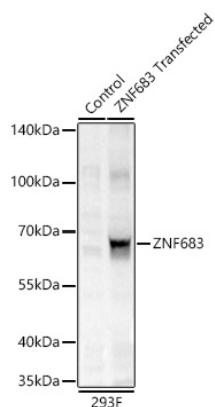
Affinity purification

Storage

Store at -20°C. Avoid freeze / thaw cycles.

Buffer: PBS with 0.09% Sodium azide, 50% glycerol, pH 7.3

Validation Data



Western blot analysis of lysates from wild type (WT) and 293F cells transfected with ZNF683 using ZNF683 Rabbit pAb (A26154) at 1:1000 dilution incubated overnight at 4°C.

Secondary antibody: HRP-conjugated Goat anti-Rabbit IgG (H+L) (AS014) at 1:10000 dilution.

Lysates/proteins: 20 µg per lane.

Blocking buffer: 3% nonfat dry milk in TBST.

Detection: ECL Basic Kit (RM00020)

.Exposure time: 10s.