

# Rab12 Rabbit mAb [MJFF-C1]

Catalog No.: A26172 **Recombinant**

## Basic Information

### Observed MW

27kDa

### Calculated MW

27kDa

### Category

Primary antibody

### Applications

WB, ELISA

### Cross-Reactivity

Human

### CloneNo number

ARC5158-01

## Background

Enables GDP binding activity. Predicted to be involved in several processes, including cellular response to insulin stimulus; endosome to lysosome transport; and secretion by cell. Predicted to act upstream of or within cellular response to interferon-gamma. Predicted to be located in lysosome; phagocytic vesicle; and recycling endosome membrane. Predicted to be active in Golgi apparatus; cytoplasmic vesicle; and plasma membrane.

## Recommended Dilutions

**WB** 1:1000 - 1:5000

**ELISA** Recommended starting concentration is 1 µg/mL. Please optimize the concentration based on your specific assay requirements.

## Immunogen Information

### Gene ID

201475

### Swiss Prot

Q6IQ22

### Immunogen

A synthetic peptide corresponding to a sequence.

### Synonyms

## Contact

☎ | 400-999-6126

✉ | [cn.market@abclonal.com.cn](mailto:cn.market@abclonal.com.cn)

🌐 | [www.abclonal.com.cn](http://www.abclonal.com.cn)

## Product Information

### Source

Rabbit

### Isotype

IgG

### Purification

Affinity purification

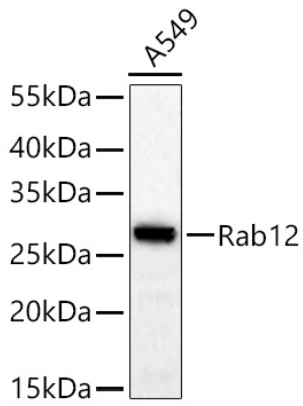
### Storage

Store at -20°C. Avoid freeze / thaw cycles.

Buffer: PBS with 0.09% Sodium azide, 0.05% BSA, 50% glycerol, pH7.3

## Validation Data

---



Western blot analysis of lysates from A549 cells using Rab12 Rabbit mAb (A26172) at 1:2000 dilution incubated at room temperature for 1.5 hours.  
Secondary antibody: HRP-conjugated Goat anti-Rabbit IgG (H+L) (AS014) at 1:10000 dilution.  
Lysates/proteins: 25 µg per lane.  
Blocking buffer: 3% nonfat dry milk in TBST.  
Detection: ECL Basic Kit (RM00020).  
Exposure time: 60s.