

CD32 Rabbit mAb

Catalog No.: A26173 **Recombinant**

Basic Information

Observed MW

40-80 kDa

Calculated MW

31kDa/33kDa/36kDa

Category

Primary antibody

Applications

WB,IHC-P,FC,ELISA

Cross-Reactivity

Mouse

CloneNo number

ARC68229

Background

CD32 (Fcgr2) is a 40 kD transmembrane glycoprotein, member of the immunoglobulin superfamily. The extracellular region of CD32 consists of two Ig C-type domains that binds the Fc region from monomeric IgG with low affinity, but binds immune complexes efficiently. CD32 can mediate phagocytosis of immune complexes and modulate cell activation. CD32 is expressed by Macrophages, neutrophils, mast cells and B cells.

Recommended Dilutions

WB 1:3000-1:10000

IHC-P 1:50 - 1:200

FC 1:500 - 1:1000

ELISA Recommended starting concentration is 1 µg/mL. Please optimize the concentration based on your specific assay requirements.

Immunogen Information

Gene ID

14130

Swiss Prot

P08101

Immunogen

Recombinant protein (or fragment). This information is considered to be commercially sensitive.

Synonyms

CD32; Fcgr2; Fcr-2; Fcr-3; Ly-17; LyM-1; Lym-1; fcRII; FcgRII; Fcgr2a; Ly-m20; Fc[g]RII; F630109E10Rik

Contact

☎ | 400-999-6126

✉ | cn.market@abclonal.com.cn

🌐 | www.abclonal.com.cn

Product Information

Source

Rabbit

Isotype

IgG

Purification

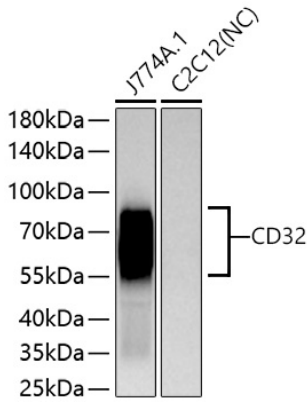
Affinity purification

Storage

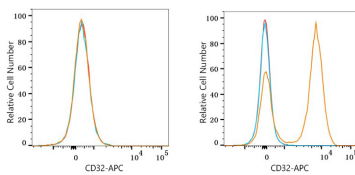
Store at -20°C. Avoid freeze / thaw cycles.

Buffer: PBS with 0.09% Sodium azide, 0.05% BSA, 50% glycerol, pH7.3

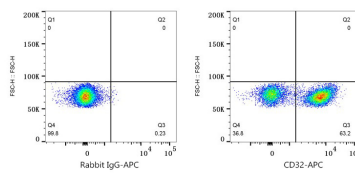
Validation Data



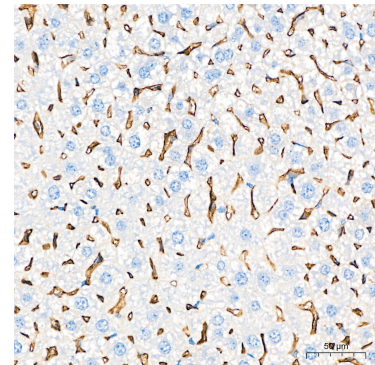
Western blot analysis of various lysates using CD32 Rabbit mAb (A26173) at 1:5000 dilution incubated overnight at 4°C.
 Secondary antibody: HRP-conjugated Goat anti-Rabbit IgG (H+L) (AS014) at 1:10000 dilution.
 Lysates/proteins: 25 µg per lane.
 Blocking buffer: 3% nonfat dry milk in TBST.
 Detection: ECL Basic Kit (RM00020).
 Negative control (NC): C2C12.
 Exposure time: 45 s.



Flow cytometry: 1×10^6 bEnd.3 cells (negative control, left) and C57BL/6 mouse splenocytes (right) were surface-stained with CD32 Rabbit mAb (A26173, 2 µg/mL, orange line) or Rabbit IgG isotype control (AC042, 2 µg/mL, blue line), followed by APC conjugated goat anti-rabbit pAb staining. Non-fluorescently stained cells were used as blank control (red line).



Flow cytometry: 1×10^6 C57BL/6 mouse splenocytes were surface-stained with Rabbit IgG isotype control (AC042, 2 µg/mL, left) or CD32 Rabbit mAb (A26173, 2 µg/mL, right), followed by APC conjugated goat anti-rabbit pAb staining.



Immunohistochemistry analysis of paraffin-embedded Mouse liver tissue using CD32 Rabbit mAb (A26173) at a dilution of 1:200 (40x lens). High pressure antigen retrieval performed with 0.01M Citrate Buffer (pH 6.0) prior to IHC staining.