

PE Rabbit anti-Human CD352/SLAMF6 mAb

Catalog No.: A26176

Basic Information

Observed MW

Refer to figures

Calculated MW

24kDa/37kDa

Category

Primary antibody

Applications

FC

Cross-Reactivity

Human

CloneNo number

ARC60903

Conjugate

PE. Ex:565nm. Em:574nm.

Recommended Dilutions

FC 5 μ l per 10^6 cells in
100 μ l volume

Background

The protein encoded by this gene is a type I transmembrane protein, belonging to the CD2 subfamily of the immunoglobulin superfamily. This encoded protein is expressed on Natural killer (NK), T, and B lymphocytes. It undergoes tyrosine phosphorylation and associates with the Src homology 2 domain-containing protein (SH2D1A) as well as with SH2 domain-containing phosphatases (SHPs). It functions as a coreceptor in the process of NK cell activation. It can also mediate inhibitory signals in NK cells from X-linked lymphoproliferative patients. Alternative splicing results in multiple transcript variants encoding distinct isoforms.

Immunogen Information

Gene ID

114836

Swiss Prot

Q96DU3

Immunogen

Recombinant protein (or fragment). This information is considered to be commercially sensitive.

Synonyms

KALI; NTBA; CD352; KAL1b; Ly108; NTB-A; SF2000

Contact

 | 400-999-6126

 | cn.market@abclonal.com.cn

 | www.abclonal.com.cn

Product Information

Source

Rabbit

Isotype

IgG

Purification

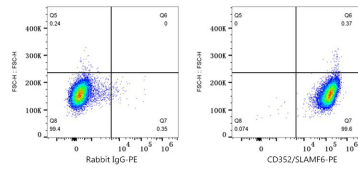
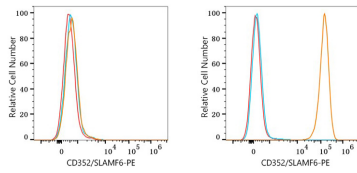
Affinity purification

Storage

Store at 2-8°C. Avoid freeze.

Buffer: PBS with 0.09% Sodium azide, 0.2% BSA, pH7.3.

Validation Data



Flow cytometry: 1X10⁶ HAP1 cells (negative control, left) and Daudi cells (right) were surface-stained with PE Rabbit anti-Human CD352/SLAMF6 mAb (A26176, 5 µl/Test, orange line) or PE Rabbit IgG isotype control (A24172, 5 µl/Test, blue line). Non-fluorescently stained cells were used as blank control (red line).

Flow cytometry: 1X10⁶ Daudi cells were surface-stained with PE Rabbit IgG isotype control (A24172, 5 µl/Test, left) or PE Rabbit anti-Human CD352/SLAMF6 mAb (A26176, 5 µl/Test, right).