

# ABflo® 647 Rabbit anti-Human CD314 mAb

**Catalog No.: A26181**

## Basic Information

**Observed MW****Calculated MW**

25kDa

**Category**

Primary antibody

**Applications**

FC

**Cross-Reactivity**

Human

**CloneNo number**

ARC67459-ABflo647

**Conjugate**

ABflo® 647. Ex:648nm. Em:664nm.

## Recommended Dilutions

**FC** 5 µl per 10<sup>6</sup> cells in  
100 µl volume

## Background

Natural killer (NK) cells are lymphocytes that can mediate lysis of certain tumor cells and virus-infected cells without previous activation. They can also regulate specific humoral and cell-mediated immunity. NK cells preferentially express several calcium-dependent (C-type) lectins, which have been implicated in the regulation of NK cell function. The NKG2 gene family is located within the NK complex, a region that contains several C-type lectin genes preferentially expressed in NK cells. This gene encodes a member of the NKG2 family. The encoded transmembrane protein is characterized by a type II membrane orientation (has an extracellular C terminus) and the presence of a C-type lectin domain. It binds to a diverse family of ligands that include MHC class I chain-related A and B proteins and UL-16 binding proteins, where ligand-receptor interactions can result in the activation of NK and T cells. The surface expression of these ligands is important for the recognition of stressed cells by the immune system, and thus this protein and its ligands are therapeutic targets for the treatment of immune diseases and cancers. Read-through transcription exists between this gene and the upstream KLR4 (killer cell lectin-like receptor subfamily C, member 4) family member in the same cluster.

## Immunogen Information

**Gene ID**

22914

**Swiss Prot**

P26718

**Immunogen**

Recombinant fusion protein containing a sequence corresponding to amino acids 73-216 of human CD314 (NP\_031386.2).

**Synonyms**

KLR; CD314; NKG2D; NKG2-D; D12S2489E

## Contact

 | 400-999-6126 | [cn.market@abclonal.com.cn](mailto:cn.market@abclonal.com.cn) | [www.abclonal.com.cn](http://www.abclonal.com.cn)

## Product Information

**Source**

Rabbit

**Isotype**

IgG

**Purification**

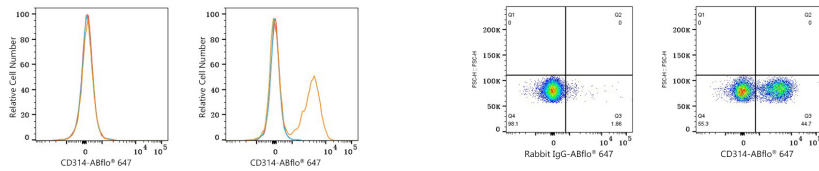
Affinity purification

**Storage**

Store at 2-8°C. Avoid freeze.

Buffer: PBS with 0.09% Sodium azide, 0.2% BSA, pH7.3.

## Validation Data



Flow cytometry:  $1 \times 10^6$  Human PBMC were surface-stained with ABflo® 647 Rabbit anti-Human CD314 mAb (A26181,5  $\mu$ l/Test, orange line) or ABflo® 647 Rabbit IgG isotype control (A22070,5  $\mu$ l/Test, blue line). Non-fluorescently stained cells were used as blank control (red line).

Flow cytometry:  $1 \times 10^6$  Human PBMC were surface-stained with ABflo® 647 Rabbit IgG isotype control (A22070,5  $\mu$ l/Test, left) or ABflo® 647 Rabbit anti-Human CD314 mAb (A26181,5  $\mu$ l/Test, right).