

# ABflo® 450 Rabbit anti-Mouse CD24 mAb

Catalog No.: A26184

## Basic Information

### Observed MW

Refer to figures

### Calculated MW

8kDa

### Category

Primary antibody

### Applications

FC

### Cross-Reactivity

Mouse

### CloneNo number

ARC66569-ABflo450

### Conjugate

ABflo® 450. Ex:406nm. Em:445nm.

## Recommended Dilutions

FC 5 µl per 10<sup>6</sup> cells in  
100 µl volume

## Background

CD24, also known as heat stable antigen HSA, is a P-selectin ligand involved in adhesion. It is a GPI-anchored glycoprotein expressed on many types of cells, including hematopoietic cells, neural cells, and epithelial cells. CD24 is widely used to delineate stages of lymphocyte development. It also binds to Siglec-10 in humans or Siglec-G in mice. CD24 is frequently used as a marker to identify and isolate cancer stem cells in various cancer types.

## Immunogen Information

### Gene ID

12484

### Swiss Prot

P24807

### Immunogen

Recombinant fusion protein containing a sequence corresponding to amino acids 27-53 of mouse CD24 (NP\_033976.1).

### Synonyms

HSA; Cd24; Ly-52; nectadrin

## Contact

☎ | 400-999-6126

✉ | [cn.market@abclonal.com.cn](mailto:cn.market@abclonal.com.cn)

🌐 | [www.abclonal.com.cn](http://www.abclonal.com.cn)

## Product Information

### Source

Rabbit

### Isotype

IgG

### Purification

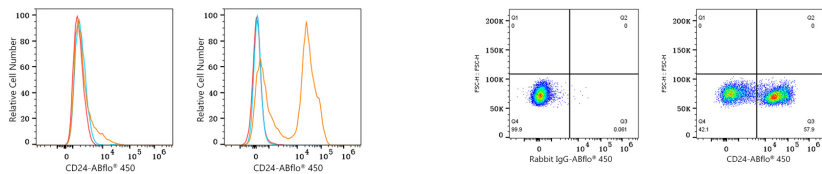
Affinity purification

### Storage

Store at 2-8°C. Avoid freeze.

Buffer: PBS with 0.09% Sodium azide, 0.2% BSA, pH7.3.

## Validation Data



Flow cytometry:  $1 \times 10^6$  RAW 264.7 cells (low expression, left) and C57BL/6 mouse splenocytes (right) were surface-stained with ABflo® 450 Rabbit anti-Mouse CD24 mAb (A26184, 5  $\mu$ l/Test, orange line) or ABflo® 450 Rabbit IgG isotype control (5  $\mu$ l/Test, blue line). Non-fluorescently stained cells were used as blank control (red line).

Flow cytometry:  $1 \times 10^6$  C57BL/6 mouse splenocytes were surface-stained with ABflo® 450 Rabbit IgG isotype control (5  $\mu$ l/Test, left) or ABflo® 450 Rabbit anti-Mouse CD24 mAb (A26184, 5  $\mu$ l/Test, right).