

ABflo® 700 Rabbit anti-Mouse CD24 mAb

Catalog No.: A26185

Basic Information

Observed MW

Refer to figures

Calculated MW

8kDa

Category

Primary antibody

Applications

FC

Cross-Reactivity

Mouse

CloneNo number

ARC66569-ABflo700

Conjugate

ABflo® 700. Ex:690nm. Em:713nm.

Recommended Dilutions

FC 5 μ l per 10^6 cells in
100 μ l volume

Background

CD24, also known as heat stable antigen HSA, is a P-selectin ligand involved in adhesion. It is a GPI-anchored glycoprotein expressed on many types of cells, including hematopoietic cells, neural cells, and epithelial cells. CD24 is widely used to delineate stages of lymphocyte development. It also binds to Siglec-10 in humans or Siglec-G in mice. CD24 is frequently used as a marker to identify and isolate cancer stem cells in various cancer types.

Immunogen Information

Gene ID

12484

Swiss Prot

P24807

Immunogen

Recombinant fusion protein containing a sequence corresponding to amino acids 27-53 of mouse CD24 (NP_033976.1).

Synonyms

HSA; Cd24; Ly-52; nectadrin

Contact

☎ | 400-999-6126

✉ | cn.market@abclonal.com.cn

🌐 | www.abclonal.com.cn

Product Information

Source

Rabbit

Isotype

IgG

Purification

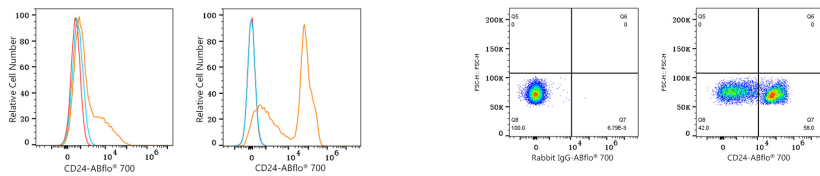
Affinity purification

Storage

Store at 2-8°C. Avoid freeze.

Buffer: PBS with 0.09% Sodium azide, 0.2% BSA, pH7.3.

Validation Data



Flow cytometry: 1×10^6 RAW 264.7 cells (low expression, left) and C57BL/6 mouse splenocytes (right) were surface-stained with ABflo® 700 Rabbit anti-Mouse CD24 mAb (A26185, 5 μ l/Test, orange line) or ABflo® 700 Rabbit IgG isotype control (A25976, 5 μ l/Test, blue line). Non-fluorescently stained cells were used as blank control (red line).

Flow cytometry: 1×10^6 C57BL/6 mouse splenocytes were surface-stained with ABflo® 700 Rabbit IgG isotype control (A25976, 5 μ l/Test, left) or ABflo® 700 Rabbit anti-Mouse CD24 mAb (A26185, 5 μ l/Test, right).