

PE Rabbit anti-Human CD185/CXCR5 mAb

Catalog No.: A26188

Basic Information

Observed MW

Calculated MW

36kDa/42kDa

Category

Primary antibody

Applications

FC

Cross-Reactivity

Human

CloneNo number

ARC62172-PE

Conjugate

PE. Ex:565nm. Em:574nm.

Recommended Dilutions

FC 5 μ l per 10^6 cells in
100 μ l volume

Background

This gene encodes a multi-pass membrane protein that belongs to the CXC chemokine receptor family. It is expressed in mature B-cells and Burkitt's lymphoma. This cytokine receptor binds to B-lymphocyte chemoattractant (BLC), and is involved in B-cell migration into B-cell follicles of spleen and Peyer patches. Alternatively spliced transcript variants encoding different isoforms have been described for this gene.

Immunogen Information

Gene ID

643

Swiss Prot

P32302

Immunogen

Recombinant fusion protein containing a sequence corresponding to amino acids 1-47aa of human CD185/CXCR5 (NP_033981.2).

Synonyms

BLR1; CD185; MDR15

Contact

 | 400-999-6126

 | cn.market@abclonal.com.cn

 | www.abclonal.com.cn

Product Information

Source

Rabbit

Isotype

IgG

Purification

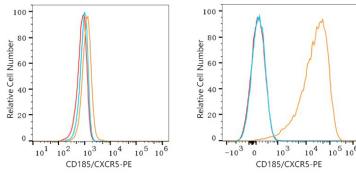
Affinity purification

Storage

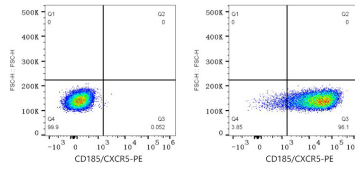
Store at 2-8°C. Avoid freeze.

Buffer: PBS with 0.03% proclin300,0.2% BSA,pH7.3.

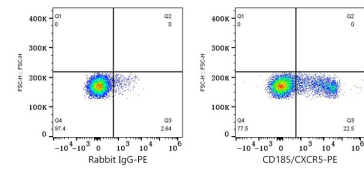
Validation Data



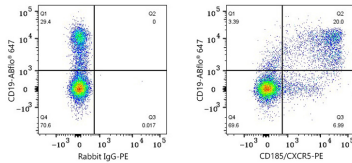
Flow cytometry: 1×10^6 HeLa cells (negative control, left) and Daudi cells (right) were surface-stained with PE Rabbit anti-Human CD185/CXCR5 mAb (A26188,5 $\mu\text{l}/\text{Test}$, orange line) or PE Rabbit IgG isotype control (A24172,5 $\mu\text{l}/\text{Test}$, blue line). Non-fluorescently stained cells were used as blank control (red line).



Flow cytometry: 1×10^6 Daudi cells were surface-stained with PE Rabbit IgG isotype control (A24172,5 $\mu\text{l}/\text{Test}$, left) or PE Rabbit anti-Human CD185/CXCR5 mAb (A26188,5 $\mu\text{l}/\text{Test}$, right).



Flow cytometry: 1×10^6 Human PBMC were surface-stained with PE Rabbit IgG isotype control (A24172,5 $\mu\text{l}/\text{Test}$, left) or PE Rabbit anti-Human CD185/CXCR5 mAb (A26188,5 $\mu\text{l}/\text{Test}$, right).



Flow cytometry: 1×10^6 Human PBMC were surface-stained with ABflo® 647 Mouse anti-Human CD19 mAb (5 $\mu\text{l}/\text{Test}$) and PE Rabbit IgG isotype control (A24172,5 $\mu\text{l}/\text{Test}$, left) or PE Rabbit anti-Human CD185/CXCR5 mAb (A26188,5 $\mu\text{l}/\text{Test}$, right). Cells in the lymphocyte gate were used for analysis.