

APC Rabbit anti-Mouse IgG2b mAb

Catalog No.: A26190

Basic Information

Observed MW

Calculated MW

37kDa

Category

Primary antibody

Applications

FC

Cross-Reactivity

Mouse

CloneNo number

ARC67783-APC

Conjugate

APC. Ex:650nm. Em:660nm.

Background

Enables antigen binding activity. Acts upstream of or within phagocytosis; positive regulation of immune response; and positive regulation of phagocytosis. Located in extracellular space. Part of immunoglobulin complex, circulating. Orthologous to several human genes including IGHG1 (immunoglobulin heavy constant gamma 1 (G1m marker)); IGHG2 (immunoglobulin heavy constant gamma 2 (G2m marker)); and IGHG3 (immunoglobulin heavy constant gamma 3 (G3m marker)).

Recommended Dilutions

FC 5 μ l per 10^6 cells in
100 μ l volume

Immunogen Information

Gene ID

16016

Swiss Prot

P01867-2

Immunogen

A synthetic peptide corresponding to a sequence within amino acids 14-113 of mouse IgG2b (P01867-2).

Synonyms

IgG2b; Igh-3; gamma2b

Contact

☎ | 400-999-6126

✉ | cn.market@abclonal.com.cn

🌐 | www.abclonal.com.cn

Product Information

Source

Rabbit

Isotype

IgG

Purification

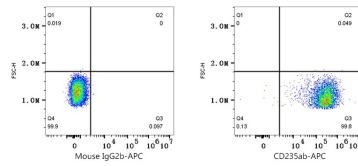
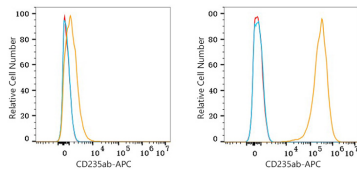
Affinity purification

Storage

Store at 2-8°C. Avoid freeze.

Buffer: PBS with 0.09% Sodium azide, 0.2% BSA, pH7.3.

Validation Data



Flow cytometry: 1×10^6 Jurkat cells (negative control, left) and HEL cells (right) were surface-stained with Mouse anti-Human CD235ab mAb (IgG2b, κ , orange line) or Mouse IgG2b isotype control (2 $\mu\text{g}/\text{mL}$, blue line), followed by APC Rabbit anti-Mouse IgG2b mAb (A26190, 5 $\mu\text{l}/\text{Test}$) staining. Non-fluorescently stained cells were used as blank control (red line).

Flow cytometry: 1×10^6 HEL cells were surface-stained with Mouse IgG2b isotype control (2 $\mu\text{g}/\text{mL}$, left) or Mouse anti-Human CD235ab mAb (IgG2b, κ , right). APC Rabbit anti-Mouse IgG2b mAb (A26190, 5 $\mu\text{l}/\text{Test}$) was used as a secondary antibody.