

# ABflo® 700 Rabbit anti-Mouse CD38 mAb

Catalog No.: A26195

## Basic Information

### Observed MW

Refer to figures

### Calculated MW

34kDa

### Category

Primary antibody

### Applications

FC

### Cross-Reactivity

Mouse

### CloneNo number

ARC59835-ABflo700

### Conjugate

ABflo® 700. Ex:690nm. Em:713nm.

## Recommended Dilutions

FC 5 µl per 10<sup>6</sup> cells in  
100 µl volume

## Background

This gene encodes a non-lineage-restricted, type II transmembrane glycoprotein that synthesizes and hydrolyzes cyclic adenosine 5'-diphosphate-ribose, an intracellular calcium ion mobilizing messenger. The release of soluble protein and the ability of membrane-bound protein to become internalized indicate both extracellular and intracellular functions for the protein. This protein has an N-terminal cytoplasmic tail, a single membrane-spanning domain, and a C-terminal extracellular region with four N-glycosylation sites. Knockout mice deficient for this gene display altered humoral immune responses. In addition, knockout mice exhibit higher locomotor activity and defects in nurturing and social behaviors.

## Immunogen Information

### Gene ID

12494

### Swiss Prot

P56528

### Immunogen

Recombinant fusion protein containing a sequence corresponding to amino acids 45-304 of mouse CD38 (NP\_031672.2).


### Synonyms

I-19; ADPRC 1; Cd38-rs1

## Contact

 | 400-999-6126

 | [cn.market@abclonal.com.cn](mailto:cn.market@abclonal.com.cn)

 | [www.abclonal.com.cn](http://www.abclonal.com.cn)

## Product Information

### Source

Rabbit

### Isotype

IgG

### Purification

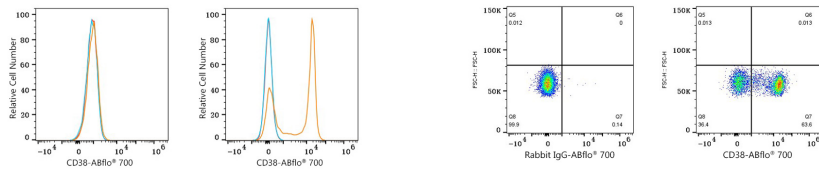
Affinity purification

### Storage

Store at 2-8°C. Avoid freeze.

Buffer: PBS with 0.09% Sodium azide, 0.2% BSA, pH7.3.

## Validation Data



Flow cytometry:  $1 \times 10^6$  C2C12 cells (negative control, left) and C57BL/6 mouse splenocytes (right) were surface-stained with ABflo® 700 Rabbit anti-Mouse CD38 mAb (A26195, 5 µl/Test, orange line) or ABflo® 700 Rabbit IgG isotype control (A25976, 5 µl/Test, blue line). Non-fluorescently stained cells were used as blank control (red line).

Flow cytometry:  $1 \times 10^6$  C57BL/6 mouse splenocytes were surface-stained with ABflo® 700 Rabbit IgG isotype control (A25976, 5 µl/Test, left) or ABflo® 700 Rabbit anti-Mouse CD38 mAb (A26195, 5 µl/Test, right).