

# Ki67 Rabbit mAb

**Catalog No.: A26200** Recombinant

## Basic Information

**Observed MW**

359kDa

**Calculated MW**

351kDa

**Category**

Primary antibody

**Applications**

WB,IHC-P,FC (intra),ELISA

**Cross-Reactivity**

Mouse, Rat

**CloneNo number**

ARC69121

## Background

Predicted to enable protein C-terminus binding activity. Involved in regulation of chromatin organization. Acts upstream of or within cholangiocyte proliferation; hepatocyte proliferation; and meiotic cell cycle. Located in chromosome; cytoplasm; and nucleolus. Is expressed in several structures, including alimentary system; brain; genitourinary system; sensory organ; and skin. Human ortholog(s) of this gene implicated in Crohn's disease; breast cancer; human immunodeficiency virus infectious disease; and pancreatic cancer. Orthologous to human MKI67 (marker of proliferation Ki-67).

## Recommended Dilutions

**WB** 1:2000 - 1:6000

**IHC-P** 1:1000 - 1:5000

**FC (intra)** 1:500 - 1:1000

**ELISA** Recommended starting concentration is 1 µg/mL. Please optimize the concentration based on your specific assay requirements.

## Immunogen Information

**Gene ID**

17345

**Swiss Prot**

E9PVX6

**Immunogen**

Recombinant fusion protein containing a sequence corresponding to amino acids 1816-2163 of mouse Mki67 (NP\_001074586.2).

**Synonyms**

Ki67; Ki-67; D630048A14Rik

## Contact

 | 400-999-6126

 | [cn.market@abclonal.com.cn](mailto:cn.market@abclonal.com.cn)
 | [www.abclonal.com.cn](http://www.abclonal.com.cn)

## Product Information

**Source**

Rabbit

**Isotype**

IgG

**Purification**

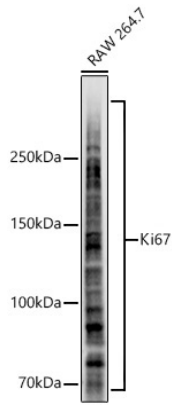
Affinity purification

**Storage**

Store at -20°C. Avoid freeze / thaw cycles.

Buffer: PBS with 0.09% Sodium azide,0.05% BSA,50% glycerol,pH7.3.

## Validation Data



Western blot analysis of lysates from RAW 264.7 cells using Ki67 Rabbit mAb (A26200) at 1:5000 dilution incubated overnight at 4°C.

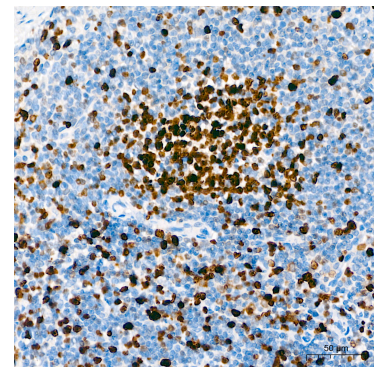
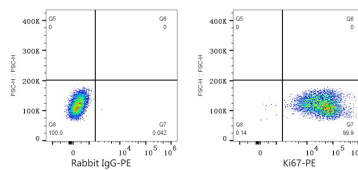
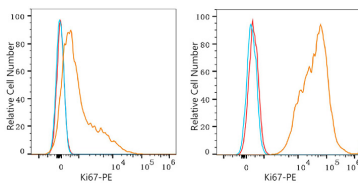
Secondary antibody: HRP-conjugated Goat anti-Rabbit IgG (H+L) (AS014) at 1:10000 dilution.

Lysates/proteins: 25 µg per lane.

Blocking buffer: 3% nonfat dry milk in TBST.

Detection: ECL Basic Kit (RM00020).

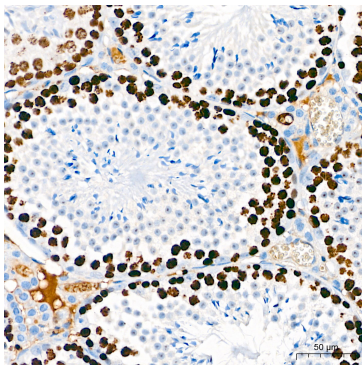
Exposure time: 20s.



Flow cytometry:  $1 \times 10^6$  C57BL/6 mouse splenocytes (Low Expression, left) and RAW 264.7 cells (right) were intracellularly-stained with Ki67 Rabbit mAb (A26200, 2 µg/mL, orange line) or Rabbit IgG isotype control (AC042, 2 µg/mL, blue line), followed by PE Donkey anti-Rabbit pAb. Non-fluorescently stained cells were used as blank control (red line).

Flow cytometry:  $1 \times 10^6$  RAW 264.7 cells were intracellularly-stained with Rabbit IgG isotype control (AC042, 2 µg/mL, left) or Ki67 Rabbit mAb (A26200, 2 µg/mL, right), followed by PE Donkey anti-Rabbit pAb.

Immunohistochemistry analysis of paraffin-embedded Rat spleen tissue using Ki67 Rabbit mAb (A26200) at a dilution of 1:3600 (40x lens). High pressure antigen retrieval performed with 0.01M Citrate Buffer (pH 6.0) prior to IHC staining.



Immunohistochemistry analysis of paraffin-embedded Mouse testis tissue using Ki67 Rabbit mAb (A26200) at a dilution of 1:3600 (40x lens). High pressure antigen retrieval performed with 0.01M Citrate Buffer (pH 6.0) prior to IHC staining.