

CD304/Neuropilin-1 Rabbit mAb

Catalog No.: A26209 **Recombinant**

Basic Information

Observed MW

130-140kDa

Calculated MW

103kDa

Category

Primary antibody

Applications

WB,IF/ICC,ELISA

Cross-Reactivity

Human

CloneNo number

ARC69111

Background

Enables protein kinase binding activity; transmembrane signaling receptor activity; and vascular endothelial growth factor binding activity. Involved in several processes, including nervous system development; regulation of signal transduction; and vasculature development. Acts upstream of or within several processes, including morphogenesis of a branching epithelium; nervous system development; and toxin transport. Located in several cellular components, including endosome; focal adhesion; and neurofilament. Is integral component of postsynaptic membrane. Is expressed in several structures, including cardiovascular system; jaw; lung; nervous system; and sensory organ. Used to study retinal vein occlusion. Human ortholog(s) of this gene implicated in lung non-small cell carcinoma. Orthologous to human NRP1 (neuropilin 1).

Recommended Dilutions

WB 1:500 - 1:1000**IF/ICC** 1:50 - 1:200**ELISA** Recommended starting concentration is 1 µg/mL. Please optimize the concentration based on your specific assay requirements.

Immunogen Information

Gene ID

18186

Swiss Prot

P97333

Immunogen

Recombinant fusion protein containing a sequence corresponding to amino acids 22-856 of mouse CD304/Neuropilin-1 (NP_032763.2).

Synonyms

Nrp; NP-1; Npn1; NPN-1; C530029I03

Contact

 | 400-999-6126 | cn.market@abclonal.com.cn | www.abclonal.com.cn

Product Information

Source

Rabbit

Isotype

IgG

Purification

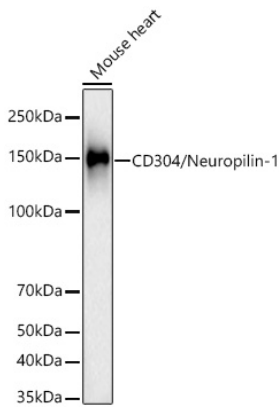
Affinity purification

Storage

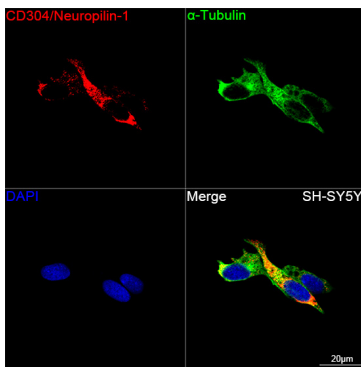
Store at -20°C. Avoid freeze / thaw cycles.

Buffer: PBS with 0.09% Sodium azide,0.05% BSA,50% glycerol,pH7.3.

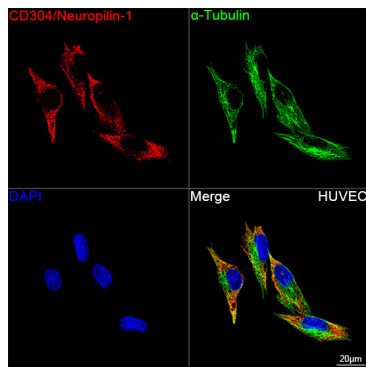
Validation Data



Western blot analysis of lysates from Mouse heart using CD304/Neuropilin-1 Rabbit mAb (A26209) at 1:1000 dilution incubated overnight at 4°C.
Secondary antibody: HRP-conjugated Goat anti-Rabbit IgG (H+L) (AS014) at 1:10000 dilution.
Lysates/proteins: 25 µg per lane.
Blocking buffer: 3% nonfat dry milk in TBST.
Detection: ECL Basic Kit (RM00020).
Exposure time: 90s.



Confocal imaging of SH-SY5Y cells using CD304/Neuropilin-1 Rabbit mAb (A26209, dilution 1:200) followed by a further incubation with Cy3 Goat Anti-Rabbit IgG (H+L) (AS007, dilution 1:500) (Red). The cells were counterstained with α -Tubulin Mouse mAb (AC012, dilution 1:400) followed by incubation with ABflo® 488-conjugated Goat Anti-Mouse IgG (H+L) Ab (AS076, dilution 1:500) (Green). DAPI was used for nuclear staining (Blue). Objective: 100x.



Confocal imaging of HUVEC cells using CD304/Neuropilin-1 Rabbit mAb (A26209, dilution 1:200) followed by a further incubation with Cy3 Goat Anti-Rabbit IgG (H+L) (AS007, dilution 1:500) (Red). The cells were counterstained with α -Tubulin Mouse mAb (AC012, dilution 1:400) followed by incubation with ABflo® 488-conjugated Goat Anti-Mouse IgG (H+L) Ab (AS076, dilution 1:500) (Green). DAPI was used for nuclear staining (Blue). Objective: 100x.