

# EGF Rabbit mAb

Catalog No.: A26211 **Recombinant**

## Basic Information

### Observed MW

11kDa

### Calculated MW

133kDa

### Category

Primary antibody

### Applications

WB,ELISA

### Cross-Reactivity

Mouse

### CloneNo number

ARC68560

## Background

This gene encodes epidermal growth factor (EGF), the founding member of the EGF family of growth factors that are implicated in cell proliferation and differentiation. The encoded protein can localize to the membrane and function in juxtacrine signaling or undergo proteolytic processing to generate a soluble form of the hormone. Mice lacking the encoded protein do not exhibit an abnormal phenotype but transgenic mice overexpressing the encoded protein exhibit hypospermatogenesis.

## Recommended Dilutions

WB 1:500 - 1:1000

## Immunogen Information

### Gene ID

13645

### Swiss Prot

P01132

### Immunogen

Recombinant fusion protein containing a sequence corresponding to amino acids 977-1029 of mouse EGF (NP\_034243.2).

### Synonyms

EGF

## Contact

 | 400-999-6126

 | [cn.market@abclonal.com.cn](mailto:cn.market@abclonal.com.cn)

 | [www.abclonal.com.cn](http://www.abclonal.com.cn)

## Product Information

### Source

Rabbit

### Isotype

IgG

### Purification

Affinity purification

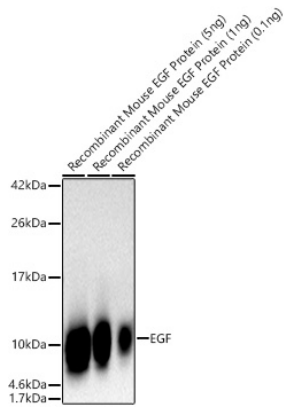
### Storage

Store at -20°C. Avoid freeze / thaw cycles.

Buffer: PBS with 0.09% Sodium azide,0.05% BSA,50% glycerol,pH7.3.

## Validation Data

---



Western blot analysis of recombinant Mouse EGF Protein (RP01684) using EGF Rabbit mAb (A26211) at 1:1000 dilution incubated overnight at 4°C.  
Secondary antibody: HRP-conjugated Goat anti-Rabbit IgG (H+L) (AS014) at 1:10000 dilution.  
Lysates/proteins: 5ng/1ng/0.1ng per lane.  
Blocking buffer: 3% nonfat dry milk in TBST.  
Detection: ECL Basic Kit (RM00020).  
Exposure time: 10s.