

Estradiol Rabbit mAb

Catalog No.: A26214 **Recombinant**

Basic Information

Observed MW

Calculated MW

Category

Primary antibody

Applications

DB,ELISA

Cross-Reactivity

Species independent

CloneNo number

ARC68155

Recommended Dilutions

DB 1:500 - 1:1000

Contact

☎ | 400-999-6126

✉ | cn.market@abclonal.com.cn

🌐 | www.abclonal.com.cn

Background

estradiol is an intermediate between estradiol valerate and estradiol benzoate, which is an estrogen drug. It can be used to treat uterine functional bleeding, primary amenorrhea, menopausal syndrome and prostate cancer. Estradiol can promote and regulate the normal growth of female sexual organs and secondary sexual characteristics, promote the maturation and growth of mammary ducts, and help to locate. Estradiol can also be used in biochemical studies. Estrogenic drugs. For uterine functional bleeding, primary amenorrhea, menopausal syndrome, prostate cancer. It can promote and regulate the normal development of female sexual organs and accessory sexual characteristics. It can promote the development and proliferation of mammary ducts, but at a higher dose, it can inhibit the release of prolactin in the anterior pituitary and reduce the secretion of milk. It can also be used for milk return. But there may be nausea, vomiting and endometrial hyperplasia and bleeding. Patients with liver and kidney dysfunction should be used with caution. Do not use for breast, vulva and vaginal mucosa. Estradiol (E2) is the most abundant and most active steroid estrogen secreted by ovarian follicular granulosa cells, corpus luteum and placenta during pregnancy. E2 is a marker of the initiation of gonadal function, which changes periodically with the menstrual cycle in adult women. E2 is converted to estrone and estriol after liver inactivation. Male E2 is mainly synthesized and secreted by Leydig cells. Estradiol mainly promotes the transformation of endometrium into proliferative phase and the development of female secondary sexual characteristics. Therefore, estradiol plays an important role in maintaining female reproductive organs, breast, long bone growth and female sexual characteristics. It is of certain value to examine estradiol in blood for the diagnosis of endocrine and gynecological diseases such as precocious puberty and dysplasia.

Immunogen Information

Gene ID

Swiss Prot

Immunogen

Chemical compounds corresponding to Estradiol.

Synonyms

E2;Ethinyl Estradiol;Oestradiol;17β estradiol

Product Information

Source

Rabbit

Isotype

IgG

Purification

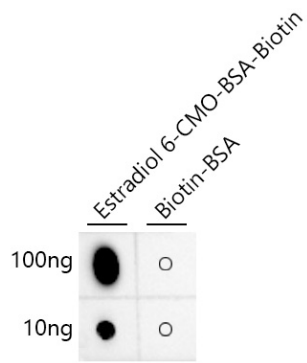
Affinity purification

Storage

Store at -20°C. Avoid freeze / thaw cycles.

Buffer: PBS with 0.05% proclin300,0.05% BSA,50% glycerol,pH7.3.

Validation Data



Dot-blot analysis of Estradiol 6-CMO-BSA-Biotin and Biotin-BSA using Estradiol Rabbit mAb (A26214) at 1:1000 dilution.