

Progesterone Rabbit mAb

Catalog No.: A26215 **Recombinant**

Basic Information

Observed MW**Calculated MW****Category**

Primary antibody

Applications

DB, ELISA

Cross-Reactivity

Species independent

CloneNo number

ARC67745

Background

Progesterone, also known as progesterone hormone and luteinizing hormone, is the main biologically active progesterone secreted by the ovary. Its molecular formula is $C_{21}H_{30}O_2$. Before ovulation, the amount of progesterone hormone produced per day is 2 ~ 3mg, mainly from the ovary. After ovulation, it rises to 20 ~ 30 mg per day, most of which is secreted by the corpus luteum in the ovary. Progesterone can protect the endometrium of women. During pregnancy, progesterone hormone can provide support and guarantee for the early growth and development of the fetus, and can play a certain role in stabilizing the uterus. In addition, the relationship between progesterone and estrogen is inseparable, both of which are very important female hormones. The role of estrogen is mainly to promote the development and maturation of women's secondary sexual characteristics, while progesterone is based on the role of estrogen to further promote the development and maturation of secondary sexual characteristics, and there is a synergistic effect between the two. Therapeutic progesterone is a naturally occurring form of hormone progesterone. Progesterone binds to progesterone receptors and interacts directly or indirectly with transcription factors, leading to heat shock protein dissociation, receptor phosphorylation, and transcriptional activation. By reducing the number of estrogen receptors and increasing their metabolism to inactive metabolites, the preparation has an inhibitory effect on estrogen.

Recommended Dilutions

DB 1:500 - 1:1000

Immunogen Information

Gene ID**Swiss Prot****Immunogen**

Chemical compounds corresponding to Progesterone.

Synonyms

Progesterone

Contact

 | 400-999-6126 | cn.market@abclonal.com.cn | www.abclonal.com.cn

Product Information

Source

Rabbit

Isotype

IgG

Purification

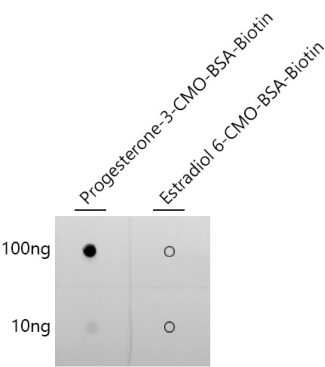
Affinity purification

Storage

Store at -20°C. Avoid freeze / thaw cycles.

Buffer: PBS containing 50% glycerol and 0.05% BSA, preserved with proclin300 or sodium azide (as specified on the Certificate of Analysis), pH 7.3.

Validation Data



Dot-blot analysis of Progesterone-3-CMO-BSA-Biotin and Estradiol 6-CMO-BSA-Biotin using Progesterone Rabbit mAb (A26215) at 1:1000 dilution.