

Liraglutide Rabbit mAb

Catalog No.: A26216 **Recombinant**

Basic Information

Observed MW

Calculated MW

Category

Primary antibody

Applications

DB,ELISA

Cross-Reactivity

Species independent

CloneNo number

ARC66882

Background

Liraglutide is a lipopeptide similar to human GLP-1 (P01275,98-128aa). Its 27-lysine residue is replaced by arginine and connected to the remaining lysine through the glutamic acid spacer. It is used as an aid to diet and exercise to improve blood glucose control in adults with type 2 diabetes. It has the effects of glucagon-like peptide-1 receptor agonists and neuroprotective agents. It is a lipopeptide and polypeptide. Liraglutide is a peptide analogue of human glucagon-like peptide-1 (GLP-1) produced by recombinant DNA and used in combination with diet and exercise to treat type 2 diabetes, either alone or in combination with other antidiabetic drugs. At present, there is no report on hepatotoxicity caused by liraglutide treatment. Liraglutide is an acylated human glucagon-like peptide-1 (GLP-1) receptor agonist. It has 97 % amino acid sequence homology with human endogenous GChemicalbookLP-1 (7-37), retains all the biological activity of GLP-1, and has GLP-1 receptor agonist effect. Through the expression of recombinant DNA in *S.cerevisiae*, its molecular structure is only one amino acid different from the natural GLP-1 molecule. The structure only modifies the following two parts of GLP-1 : the 34th lysine is replaced by arginine, and a glutamic acid-mediated 16-carbon palmitoyl fatty acid side chain is added to the 26th lysine.

Recommended Dilutions

DB 1:500 - 1:1000

Immunogen Information

Gene ID

Swiss Prot

Immunogen

Chemical compounds corresponding to Liraglutide.

Synonyms

Liraglutide

Contact

☎ | 400-999-6126

✉ | cn.market@abclonal.com.cn

🌐 | www.abclonal.com.cn

Product Information

Source

Rabbit

Isotype

IgG

Purification

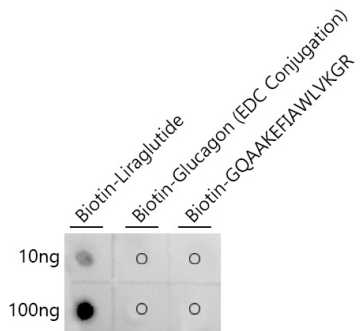
Affinity purification

Storage

Store at -20°C. Avoid freeze / thaw cycles.

Buffer: PBS with 0.05% proclin300,0.05% BSA,50% glycerol,pH7.3.

Validation Data



Dot-blot analysis of Biotin-Liraglutide, Biotin-Glucagon (EDC Conjugation) and Biotin-GQAAKEFIAWLVKGR using Liraglutide Rabbit mAb