

# ABflo® 700 Rabbit anti-Mouse IgM mAb

Catalog No.: A26232

## Basic Information

### Observed MW

### Calculated MW

50kDa/53kDa

### Category

Primary antibody

### Applications

FC

### Cross-Reactivity

Mouse

### CloneNo number

ARC58894-ABflo700

### Conjugate

ABflo® 700. Ex:690nm. Em:713nm.

## Recommended Dilutions

FC 5 µl per 10<sup>6</sup> cells in  
100 µl volume

## Background

Enables several functions, including antigen binding activity; identical protein binding activity; and immunoglobulin receptor binding activity. Acts upstream of or within several processes, including early endosome to late endosome transport; immunoglobulin mediated immune response; and positive regulation of B cell proliferation. Located in external side of plasma membrane; extracellular space; and perinuclear region of cytoplasm. Part of B cell receptor complex and immunoglobulin complex, circulating. Is expressed in several structures, including brain; hemolymphoid system; and liver. Used to study non-Hodgkin lymphoma and type 1 diabetes mellitus. Human ortholog(s) of this gene implicated in agammaglobulinemia. Orthologous to human IGHM (immunoglobulin heavy constant mu).

## Immunogen Information

### Gene ID

### Swiss Prot

P01872

### Immunogen

Recombinant fusion protein containing a sequence corresponding to amino acids 105-454 of mouse IgM (P01872).

### Synonyms

Igm; muH; Igh6; Igh-6; Igh-M

## Contact

☎ | 400-999-6126

✉ | [cn.market@abclonal.com.cn](mailto:cn.market@abclonal.com.cn)

🌐 | [www.abclonal.com.cn](http://www.abclonal.com.cn)

## Product Information

### Source

Rabbit

### Isotype

IgG

### Purification

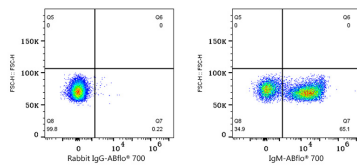
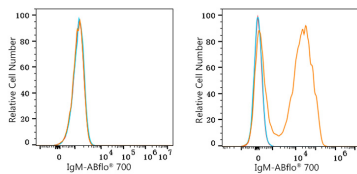
Affinity purification

### Storage

Store at 2-8°C. Avoid freeze.

Buffer: PBS with 0.09% Sodium azide, 0.2% BSA, pH7.3.

## Validation Data



Flow cytometry:  $1 \times 10^6$  NIH/3T3 cells (negative control, left) and C57BL/6 mouse splenocytes (right) were surface-stained with ABflo® 700 Rabbit anti-Mouse IgM mAb (A26232, 5 µl/Test, orange line) or ABflo® 700 Rabbit IgG isotype control (5 µl/Test, blue line). Non-fluorescently stained cells were used as blank control (red line).

Flow cytometry:  $1 \times 10^6$  C57BL/6 mouse splenocytes were surface-stained with ABflo® 700 Rabbit IgG isotype control (5 µl/Test, left) or ABflo® 700 Rabbit anti-Mouse IgM mAb (A26232, 5 µl/Test, right).