

ABflo® 700 Rabbit anti-Human CD55 mAb

Catalog No.: A26234

Basic Information

Observed MW

Refer to figures

Calculated MW

39kDa/41kDa/48kDa/56kDa/59kDa

Category

Primary antibody

Applications

FC

Cross-Reactivity

Human

CloneNo number

ARC54520

Conjugate

ABflo® 700. Ex:690nm. Em:713nm.

Recommended Dilutions

FC 5 µl per 10⁶ cells in
100 µl volume

Background

This gene encodes a glycoprotein involved in the regulation of the complement cascade. Binding of the encoded protein to complement proteins accelerates their decay, thereby disrupting the cascade and preventing damage to host cells. Antigens present on this protein constitute the Cromer blood group system (CROM). Alternative splicing results in multiple transcript variants. The predominant transcript variant encodes a membrane-bound protein, but alternatively spliced transcripts may produce soluble proteins.

Immunogen Information

Gene ID

1604

Swiss Prot

P08174

Immunogen

Recombinant protein (or fragment). This information is considered to be commercially sensitive.

Synonyms

CR; TC; DAF; CROM; CHAPLE

Contact

☎ | 400-999-6126

✉ | cn.market@abclonal.com.cn

🌐 | www.abclonal.com.cn

Product Information

Source

Rabbit

Isotype

IgG

Purification

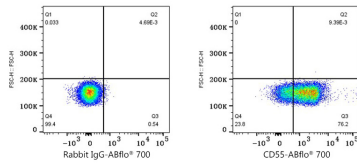
Affinity purification

Storage

Store at 2-8°C. Avoid freeze.

Buffer: PBS with 0.09% Sodium azide, 0.2% BSA, pH7.3.

Validation Data



Flow cytometry: 1×10^6 Human PBMC were surface-stained with ABflo® 700 Rabbit IgG isotype control (A25976,5 μ l/Test,left) or ABflo® 700 Rabbit anti-Human CD55 mAb (A26234,5 μ l/Test,right). Cells in the lymphocyte gate were used for analysis.