

ABflo® 700 Rabbit anti-Human CD140b/PDGFRβ mAb

Catalog No.: A26236

Basic Information

Observed MW

Refer to figures

Calculated MW

37kDa/123kDa

Category

Primary antibody

Applications

FC

Cross-Reactivity

Human

CloneNo number

ARC59957-ABflo700

Conjugate

ABflo® 700. Ex:690nm. Em:713nm.

Recommended Dilutions

FC 5 μl per 10⁶ cells in
100 μl volume

Background

This gene encodes a cell surface tyrosine kinase receptor for members of the platelet-derived growth factor family. These growth factors are mitogens for cells of mesenchymal origin. The identity of the growth factor bound to a receptor monomer determines whether the functional receptor is a homodimer or a heterodimer, composed of both platelet-derived growth factor receptor alpha and beta polypeptides. This gene is flanked on chromosome 5 by the genes for granulocyte-macrophage colony-stimulating factor and macrophage-colony stimulating factor receptor; all three genes may be implicated in the 5-q syndrome. A translocation between chromosomes 5 and 12, that fuses this gene to that of the translocation, ETV6, leukemia gene, results in chronic myeloproliferative disorder with eosinophilia.

Immunogen Information

Gene ID

5159

Swiss Prot

P09619

Immunogen

Recombinant fusion protein containing a sequence corresponding to amino acids 33-530 of human CD140b/PDGFRβ(NP_002600.1).

Synonyms

PDGFRB; CD140B; IBGC4; IMF1; JTK12; KOGS; PDGFR; PDGFR-1; PDGFR1; PENTT; platelet-derived growth factor receptor beta

Contact

☎ | 400-999-6126

✉ | cn.market@abclonal.com.cn

🌐 | www.abclonal.com.cn

Product Information

Source

Rabbit

Isotype

IgG

Purification

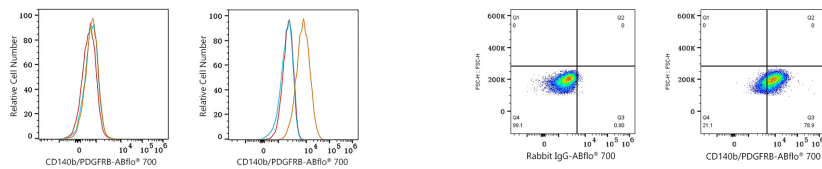
Affinity purification

Storage

Store at 2-8°C. Avoid freeze.

Buffer: PBS with 0.09% Sodium azide, 0.2% BSA, pH7.3.

Validation Data



Flow cytometry: 1×10^6 MCF7 cells (negative control, left) and U-87MG cells (right) were surface-stained with ABflo® 700 Rabbit anti-Human CD140b/PDGFR β mAb (A26236, 5 μ l/Test, orange line) or ABflo® 700 Rabbit IgG isotype control (A25976, 5 μ l/Test, blue line). Non-fluorescently stained cells were used as blank control (red line).

Flow cytometry: 1×10^6 U-87MG cells were surface-stained with ABflo® 700 Rabbit IgG isotype control (A25976, 5 μ l/Test, left) or ABflo® 700 Rabbit anti-Human CD140b/PDGFR β mAb (A26236, 5 μ l/Test, right).