

# ABflo® 700 Rabbit anti-Human CD31/PECAM1 mAb

Catalog No.: A26238

## Basic Information

### Observed MW

Refer to figures

### Calculated MW

83kDa

### Category

Primary antibody

### Applications

FC

### Cross-Reactivity

Human

### CloneNo number

ARC54799-ABflo700

### Conjugate

ABflo® 700. Ex:690nm. Em:713nm.

## Recommended Dilutions

FC 5  $\mu$ l per  $10^6$  cells in  
100  $\mu$ l volume

## Background

The protein encoded by this gene is found on the surface of platelets, monocytes, neutrophils, and some types of T-cells, and makes up a large portion of endothelial cell intercellular junctions. The encoded protein is a member of the immunoglobulin superfamily and is likely involved in leukocyte migration, angiogenesis, and integrin activation.

## Immunogen Information

### Gene ID

5175

### Swiss Prot

P16284

### Immunogen

Recombinant fusion protein containing a sequence corresponding to amino acids 28-601 of human CD31/PECAM1 (NP\_000433.4).

### Synonyms

CD31; PECA1; GPIIA'; PECAM-1; endoCAM; CD31/EndoCAM

## Contact

☎ | 400-999-6126

✉ | [cn.market@abclonal.com.cn](mailto:cn.market@abclonal.com.cn)

🌐 | [www.abclonal.com.cn](http://www.abclonal.com.cn)

## Product Information

### Source

Rabbit

### Isotype

IgG

### Purification

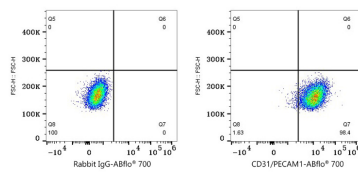
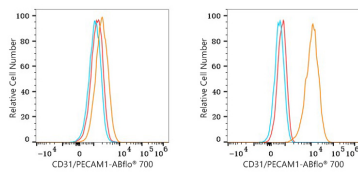
Affinity purification

### Storage

Store at 2-8°C. Avoid freeze.

Buffer: PBS with 0.09% Sodium azide, 0.2% BSA, pH7.3.

## Validation Data



Flow cytometry:  $1 \times 10^6$  SK-BR-3 cells (negative control, left) and HEL cells (right) were surface-stained with ABflo® 700 Rabbit anti-Human CD31/PECAM1 mAb (A26238, 5  $\mu$ l/Test, orange line) or ABflo® 700 Rabbit IgG isotype control (A25976, 5  $\mu$ l/Test, blue line). Non-fluorescently stained cells were used as blank control (red line).

Flow cytometry:  $1 \times 10^6$  HEL cells were surface-stained with ABflo® 700 Rabbit IgG isotype control (A25976, 5  $\mu$ l/Test, left) or ABflo® 700 Rabbit anti-Human CD31/PECAM1 mAb (A26238, 5  $\mu$ l/Test, right).