

ABflo® 488 Rabbit anti-Mouse Ki67 mAb

Catalog No.: A26239

Basic Information

Observed MW

Calculated MW

351kDa

Category

Primary antibody

Applications

FC (intra)

Cross-Reactivity

Mouse

CloneNo number

ARC69121-ABflo488

Conjugate

ABflo® 488. Ex:491nm. Em:516nm.

Recommended Dilutions

FC (intra) 5 µl per 10⁶ cells in
 100 µl volume

Background

Predicted to enable protein C-terminus binding activity. Involved in regulation of chromatin organization. Acts upstream of or within cholangiocyte proliferation; hepatocyte proliferation; and meiotic cell cycle. Located in chromosome; cytoplasm; and nucl

Immunogen Information

Gene ID

17345

Swiss Prot

E9PVX6

Immunogen

Recombinant fusion protein containing a sequence corresponding to amino acids 1816-2163 of mouse Ki-67 (NP_001074586.2).

Synonyms

Ki67; Ki-67; D630048A14Rik

Contact

☎ | 400-999-6126

✉ | cn.market@abclonal.com.cn

🌐 | www.abclonal.com.cn

Product Information

Source

Rabbit

Isotype

IgG

Purification

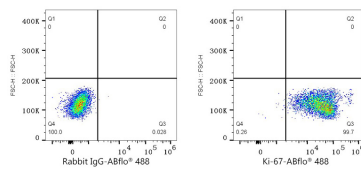
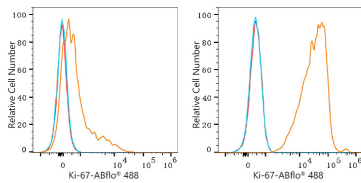
Affinity purification

Storage

Store at 2-8°C. Avoid freeze.

Buffer: PBS with 0.09% Sodium azide,0.2% BSA,pH7.3.

Validation Data



Flow cytometry: 1×10^6 C57BL/6 mouse splenocytes (Low Expression, left) and RAW 264.7 cells (right) were intracellularly-stained with ABflo® 488 Rabbit anti-Mouse Ki67 mAb (A26239, 5 μ l/Test, orange line) or ABflo® 488 Rabbit IgG isotype control (A22069, 5 μ l/Test, blue line). Non-fluorescently stained cells were used as blank control (red line).

Flow cytometry: 1×10^6 RAW 264.7 cells were intracellularly-stained with ABflo® 488 Rabbit IgG isotype control (A22069, 5 μ l/Test, left) or ABflo® 488 Rabbit anti-Mouse Ki67 mAb (A26239, 5 μ l/Test, right).