

# ABflo® 647 Rabbit anti-Mouse Ki67 mAb

Catalog No.: A26240

## Basic Information

### Observed MW

### Calculated MW

351kDa

### Category

Primary antibody

### Applications

FC (intra)

### Cross-Reactivity

Mouse

### CloneNo number

ARC69121-ABflo647

### Conjugate

ABflo® 647. Ex:648nm. Em:664nm.

## Recommended Dilutions

**FC (intra)**      5 µl per 10<sup>6</sup> cells in  
                         100 µl volume

## Background

Predicted to enable protein C-terminus binding activity. Involved in regulation of chromatin organization. Acts upstream of or within cholangiocyte proliferation; hepatocyte proliferation; and meiotic cell cycle. Located in chromosome; cytoplasm; and nucl

## Immunogen Information

### Gene ID

17345

### Swiss Prot

E9PVX6

### Immunogen

Recombinant fusion protein containing a sequence corresponding to amino acids 1816-2163 of mouse Ki-67 (NP\_001074586.2).

### Synonyms

Ki67; Ki-67; D630048A14Rik

## Contact

☎ | 400-999-6126

✉ | [cn.market@abclonal.com.cn](mailto:cn.market@abclonal.com.cn)

🌐 | [www.abclonal.com.cn](http://www.abclonal.com.cn)

## Product Information

### Source

Rabbit

### Isotype

IgG

### Purification

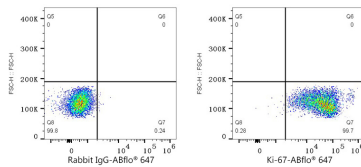
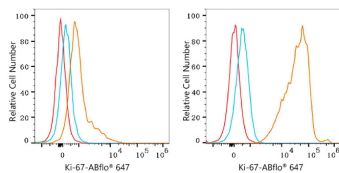
Affinity purification

### Storage

Store at 2-8°C. Avoid freeze.

Buffer: PBS with 0.09% Sodium azide,0.2% BSA,pH7.3.

## Validation Data



Flow cytometry:  $1 \times 10^6$  C57BL/6 mouse splenocytes (Low Expression, left) and RAW 264.7 cells (right) were intracellularly-stained with ABflo® 647 Rabbit anti-Mouse Ki67 mAb (A26240, 5  $\mu$ l/Test, orange line) or ABflo® 647 Rabbit IgG isotype control (A22070, 5  $\mu$ l/Test, blue line). Non-fluorescently stained cells were used as blank control (red line).

Flow cytometry:  $1 \times 10^6$  RAW 264.7 cells were intracellularly-stained with ABflo® 647 Rabbit IgG isotype control (A22070, 5  $\mu$ l/Test, left) or ABflo® 647 Rabbit anti-Mouse Ki67 mAb (A26240, 5  $\mu$ l/Test, right).