

# CD137 Rabbit mAb

Catalog No.: A26248 **Recombinant**

## Basic Information

**Observed MW**  
24-28kDa,40-50kDa

**Calculated MW**  
28kDa

**Category**  
Primary antibody

**Applications**  
WB,IF/ICC,ELISA

**Cross-Reactivity**  
Mouse

**CloneNo number**  
ARC69317

## Background

Enables cytokine binding activity; identical protein binding activity; and signaling receptor activity. Acts upstream of or within negative regulation of interleukin-10 production; negative regulation of interleukin-12 production; and regulation of cell population proliferation. Located in external side of plasma membrane and extracellular space. Is expressed in renal vasculature. Orthologous to human TNFRSF9 (TNF receptor superfamily member 9).

## Recommended Dilutions

**WB** 1:500 - 1:1000

**IF/ICC** 1:50 - 1:200

**ELISA** Recommended starting concentration is 1 µg/mL. Please optimize the concentration based on your specific assay requirements.

## Immunogen Information

<b>Gene ID</b> 21942	<b>Swiss Prot</b> P20334
-------------------------	-----------------------------

**Immunogen**  
Recombinant fusion protein containing a sequence corresponding to amino acids 24-187 of mouse CD137 (NP\_001070977.1).

**Synonyms**  
ILA; Ly63; 4-1BB; Cd137; CDw137; A930040I11Rik

## Contact

☎ | 400-999-6126

✉ | [cn.market@abclonal.com.cn](mailto:cn.market@abclonal.com.cn)

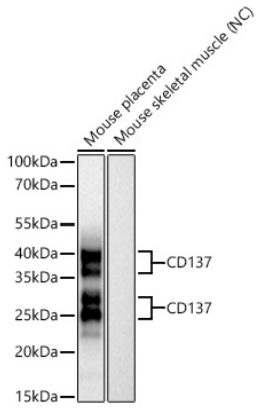
🌐 | [www.abclonal.com.cn](http://www.abclonal.com.cn)

## Product Information

<b>Source</b> Rabbit	<b>Isotype</b> IgG	<b>Purification</b> Affinity purification
-------------------------	-----------------------	----------------------------------------------

**Storage**  
Store at -20°C. Avoid freeze / thaw cycles.  
Buffer: PBS with 0.09% Sodium azide,0.05% BSA,50% glycerol,pH7.3.

## Validation Data



Western blot analysis of various lysates using CD137 Rabbit mAb (A26248) at 1:1000 dilution incubated overnight at 4°C.

Secondary antibody: HRP-conjugated Goat anti-Rabbit IgG (H+L) (AS014) at 1:10000 dilution.

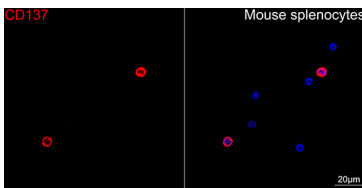
Lysates/proteins: 25 µg per lane.

Blocking buffer: 3% nonfat dry milk in TBST.

Detection: ECL Basic Kit (RM00020).

Negative control (NC): Mouse skeletal muscle

Exposure time: 30s.



Confocal imaging of Mouse splenocytes cells using CD137 Rabbit mAb (A26248, dilution 1:200) followed by a further incubation with Cy3 Goat Anti-Rabbit IgG (H+L) (AS007, dilution 1:500) (Red). DAPI was used for nuclear staining (Blue). Objective: 100x.