

PE Rabbit anti-Human TLR1 mAb

Catalog No.: A26258

Basic Information

Observed MW

Calculated MW

90kDa

Category

Primary antibody

Applications

FC

Cross-Reactivity

Human

CloneNo number

ARC68825-PE

Conjugate

PE. Ex:565nm. Em:574nm.

Recommended Dilutions

FC 5 μ l per 10^6 cells in
100 μ l volume

Background

The protein encoded by this gene is a member of the Toll-like receptor (TLR) family which plays a fundamental role in pathogen recognition and activation of innate immunity. TLRs are highly conserved from *Drosophila* to humans and share structural and functional similarities. They recognize pathogen-associated molecular patterns (PAMPs) that are expressed on infectious agents, and mediate the production of cytokines necessary for the development of effective immunity. The various TLRs exhibit different patterns of expression. This gene is ubiquitously expressed, and at higher levels than other TLR genes. Different length transcripts presumably resulting from use of alternative polyadenylation site, and/or from alternative splicing, have been noted for this gene.

Immunogen Information

Gene ID

7096

Swiss Prot

Q15399

Immunogen

A synthetic peptide corresponding to a sequence within amino acids 325-424 of human TLR1 (NP_003254.2).

Synonyms

TIL; CD281; rsc786; TIL. LPRS5

Contact

☎ | 400-999-6126

✉ | cn.market@abclonal.com.cn

🌐 | www.abclonal.com.cn

Product Information

Source

Rabbit

Isotype

IgG

Purification

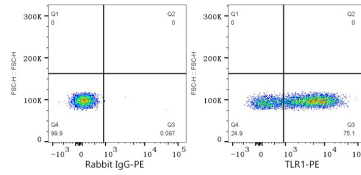
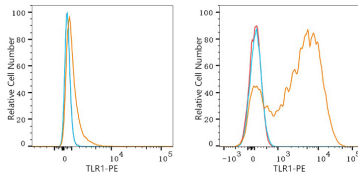
Affinity purification

Storage

Store at 2-8°C. Avoid freeze.

Buffer: PBS with 0.09% Sodium azide, 0.2% BSA, pH7.3.

Validation Data



Flow cytometry: 1×10^6 RT4 cells (negative control, left) and Human PBMC cells (right) were surface-stained with PE Rabbit anti-Human TLR1 mAb (A26258, 5 μ l/Test, orange line) or PE Rabbit IgG isotype control (A24172, 5 μ l/Test, blue line). Non-fluorescently stained cells were used as blank control (red line).

Flow cytometry: 1×10^6 Human PBMC cells were surface-stained with PE Rabbit IgG isotype control (A24172, 5 μ l/Test, left) or PE Rabbit anti-Human TLR1 mAb (A26258, 5 μ l/Test, right).