

APC Rabbit anti-Mouse CD272/BTLA mAb

Catalog No.: A26261

Basic Information

Observed MW

Calculated MW

22kDa/34kDa

Category

Primary antibody

Applications

FC

Cross-Reactivity

Mouse

CloneNo number

ARC63351-APC

Conjugate

APC. Ex:650nm. Em:660nm.

Background

Enables signaling receptor activity. Acts upstream of or within immune response-regulating cell surface receptor signaling pathway; negative regulation of B cell proliferation; and negative regulation of alpha-beta T cell proliferation. Located in external side of plasma membrane. Is integral component of plasma membrane. Orthologous to human BTLA (B and T lymphocyte associated).

Recommended Dilutions

FC 5 μ l per 10^6 cells in
100 μ l volume

Immunogen Information

Gene ID

208154

Swiss Prot

Q7TSA3

Immunogen

Recombinant fusion protein containing a sequence corresponding to amino acids 30-176 of mouse CD272/BTLA (NP_001032808.2).

Synonyms

A630002H24

Contact

 | 400-999-6126

 | cn.market@abclonal.com.cn

 | www.abclonal.com.cn

Product Information

Source

Rabbit

Isotype

IgG

Purification

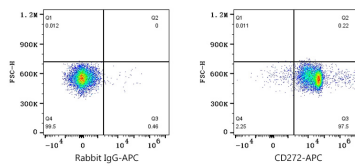
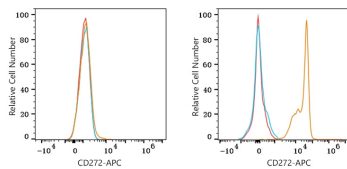
Affinity purification

Storage

Store at 2-8°C. Avoid freeze.

Buffer: PBS with 0.09% Sodium azide, 0.2% BSA, pH7.3.

Validation Data



Flow cytometry: 1×10^6 C2C12 cells (negative control, left) and C57BL/6 mouse splenocytes (right) were surface-stained with APC Rabbit anti-Mouse CD272/BTLA mAb (A26261,5 μ l/Test, orange line) or APC Rabbit IgG isotype control (A24173,5 μ l/Test, blue line). Non-fluorescently stained cells were used as blank control (red line).

Flow cytometry: 1×10^6 C57BL/6 mouse splenocytes were surface-stained with APC Rabbit IgG isotype control (A24173,5 μ l/Test, left) or APC Rabbit anti-Mouse CD272/BTLA mAb (A26261,5 μ l/Test, right).