

PE Rabbit anti-Human TROP-2 mAb

Catalog No.: A26262

Basic Information

Observed MW

Calculated MW

36kDa

Category

Primary antibody

Applications

FC

Cross-Reactivity

Human

CloneNo number

ARC51505-PE

Conjugate

PE. Ex:565nm. Em:574nm.

Background

This intronless gene encodes a carcinoma-associated antigen. This antigen is a cell surface receptor that transduces calcium signals. Mutations of this gene have been associated with gelatinous drop-like corneal dystrophy.

Recommended Dilutions

FC 5 μ l per 10^6 cells in
100 μ l volume

Immunogen Information

Gene ID

4070

Swiss Prot

P09758

Immunogen

Recombinant fusion protein containing a sequence corresponding to amino acids 27-274 of human TROP-2 (NP_002344.2).

Synonyms

EGP1; GP50; M1S1; EGP-1; TROP2; GA7331; GA733-1

Contact

 | 400-999-6126

 | cn.market@abclonal.com.cn

 | www.abclonal.com.cn

Product Information

Source

Rabbit

Isotype

IgG

Purification

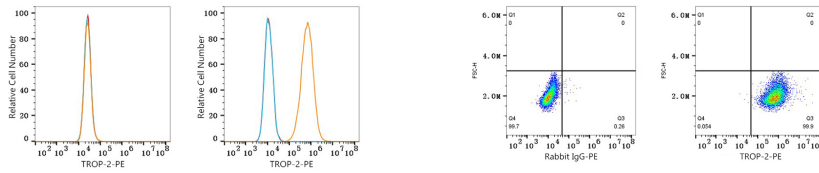
Affinity purification

Storage

Store at 2-8°C. Avoid freeze.

Buffer: PBS with 0.09% Sodium azide, 0.2% BSA, pH7.3.

Validation Data



Flow cytometry: 1×10^6 U-118 MG cells (negative control, left) and MCF7 cells (right) were surface-stained with PE Rabbit anti-Human TROP-2 mAb (A26262, 5 μ l/Test, orange line) or PE Rabbit IgG isotype control (A24172, 5 μ l/Test, blue line). Non-fluorescently stained cells were used as blank control (red line).

Flow cytometry: 1×10^6 MCF7 cells were surface-stained with PE Rabbit IgG isotype control (A24172, 5 μ l/Test, left) or PE Rabbit anti-Human TROP-2 mAb (A26262, 5 μ l/Test, right).