

PE Rabbit anti-Human CD48 mAb

Catalog No.: A26263

Basic Information

Observed MW

Refer to figures

Calculated MW

19kDa/28kDa

Category

Primary antibody

Applications

FC

Cross-Reactivity

Human

CloneNo number

ARC53039

Conjugate

PE. Ex:565nm. Em:574nm.

Recommended Dilutions

FC 5 μ l per 10^6 cells in
100 μ l volume

Background

This gene encodes a member of the CD2 subfamily of immunoglobulin-like receptors which includes SLAM (signaling lymphocyte activation molecules) proteins. The encoded protein is found on the surface of lymphocytes and other immune cells, dendritic cells and endothelial cells, and participates in activation and differentiation pathways in these cells. The encoded protein does not have a transmembrane domain, however, but is held at the cell surface by a GPI anchor via a C-terminal domain which maybe cleaved to yield a soluble form of the receptor. Multiple transcript variants encoding different isoforms have been found for this gene.

Immunogen Information

Gene ID

962

Swiss Prot

P09326

Immunogen

Recombinant protein (or fragment). This information is considered to be commercially sensitive.

Synonyms

BCM1; BLAST; hCD48; mCD48; BLAST1; SLAMF2; MEM-102

Contact

 | 400-999-6126

 | cn.market@abclonal.com.cn

 | www.abclonal.com.cn

Product Information

Source

Rabbit

Isotype

IgG

Purification

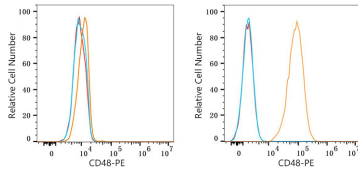
Affinity purification

Storage

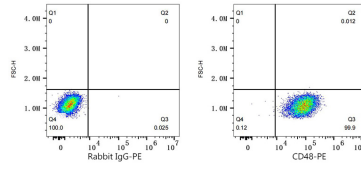
Store at 2-8°C. Avoid freeze.

Buffer: PBS with 0.09% Sodium azide, 0.2% BSA, pH7.3.

Validation Data



Flow cytometry: 1×10^6 K-562 cells (negative control, left) and Daudi cells (right) were surface-stained with PE Rabbit anti-Human CD48 mAb (A26263, 5 μ l/Test, orange line) or PE Rabbit IgG isotype control (A24172, 5 μ l/Test, blue line). Non-fluorescently stained cells were used as blank control (red line).



Flow cytometry: 1×10^6 Daudi cells were surface-stained with PE Rabbit IgG isotype control (A24172, 5 μ l/Test, left) or PE Rabbit anti-Human CD48 mAb (A26263, 5 μ l/Test, right).