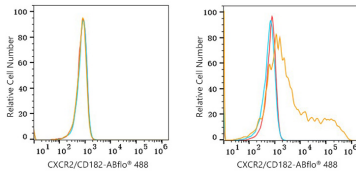


Validation Data



Flow cytometry: 1×10^6 293T cells (negative control, left) and 293T (Transfection, right) cells were surface-stained with Mouse anti-Human CXCR2/CD182 mAb (5 μ l/Test, orange line), followed by Alexa Fluor® 488 conjugated goat anti-mouse pAb staining, or ABflo® 488 Mouse IgG 2c isotype control (A26279, 5 μ l/Test, blue line). Non-fluorescently stained cells were used as blank control (red line).